

## **Historic, Archive Document**

Do not assume content reflects current scientific knowledge, policies, or practices.



62,67 Index\*\*

LIBRARY RECEIVED  
★ SEP 27 1951 ★  
U. S. Department of Agriculture

# SPRING HILL'S 1951 FALL Bargain Catalog

## HARDY EVERBLOOMING Hybrid Tea ROSES

Feature your garden with Spring Hill's wonderful, thrifty, OHIO GROWN BUSHES. Excellent choice of varieties, all are free blooming, winter hardy, with large, double flowers blooming continuous from early spring until winter.

- (A) **GOLDEN SASTAGO**  
1R1—Rich, buttercup-yellow.
- (B) **McGREY'S SCARLET**  
1R2—Bright scarlet-red.
- (C) **PINK DAWN**  
1R3—Huge, clear rose-pink.
- (D) **K. A. VICTORIA**  
1R4—Exotic, fragrant, white.
- (E) **POINSETTIA**  
1R5—Glowing crimson-red.
- (F) **PRES. HOOVER**  
1R6—Extra large, bi-color.

Choice of above 6 roses. Big, 2 yr. No. 1 size, will bloom next summer.

**\$1.25 each; 3 for \$3.45**

1R7—Garden of six as pictured, A, B, C, D, E, F, No. 1 size. Regularly \$7.50.

**All 6 for \$6.60**

Choice of above 6 roses. No. 1 1/2 size, will bloom next summer.

**\$1.10 each; 3 for \$2.98**

1R8—Garden of six as pictured, A, B, C, D, E, F, No. 1 1/2 size. Regularly \$6.60.

**All 6 for \$5.75**

## HARDY, OHIO GROWN, EVERBLOOMING HYBRID TEA Rose Color Special

1R9—Spring Hill makes this special low price offer for those who care little for names but want abundance and continuous, double blooms. GUARANTEED SATISFACTION on each scarlet, pink, yellow, bi-color, white and crimson. Spring Hill's selection of varieties from our hardy OHIO GROWN BUSHES. Only the best, double H. T. everblooming kinds. One each of six different colors named above, shipped unlabeled in bundles of six. No broken collections.

Thrifty 2 year field grown seconds, **6 for \$4.50** (E)

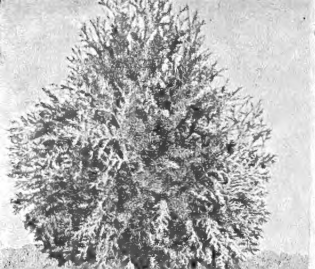
Visit America's Most Thrilling  
**CHRYSANTHEMUM FIELD DISPLAY**  
(See page 2 for information)

**SPRING HILL NURSERIES, TIPP CITY, OHIO • ESTABLISHED 1849**



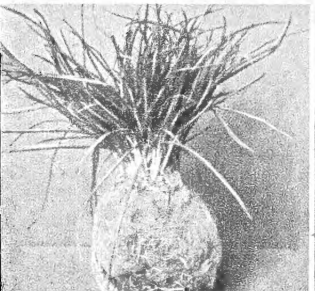
**FREE**  
Hardy field grown chrysanthemum (65c value). Free to each family that visits the nursery from Sept. 15 to Nov. 15. Spring Hill's choice of color and size. Offer can be changed without notice. Mail order customers see page 2 for FREE Plants.



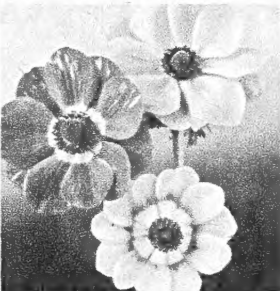


(A) 3 American Arbor Vitae—4 yr., 6 to 8 inch planting size. Worth 70c.

(B) 2 Royal Blue Indian Lily—Winter hardy, blooming size bulbs. Worth 79c.



(C) 3 Hardy Chives—2 yr. plants, plant indoors for winter salads. Worth 69c.



(D) 6 Monarch Anemones—Large blooming size bulbs good for forcing and outdoors. Worth 75c.



Visit America's Most Thrilling

# CHRYSANTHEMUM FIELD DISPLAY

MILLIONS OF BLOOMS!  
ACRES OF PLANTS!  
HUNDREDS OF COLORS!

All sizes and types of the world's leading varieties.

Valuable Gift Given

# FREE

FOR MAIL ORDERS

To those who send their order early we express our appreciation with these premium gifts. (Premiums listed below)

Orders of \$3.00 to \$5.00 select one premium.

Orders of \$5.00 to \$7.50 select 2 premiums.

Orders of \$7.50 to \$10.00 select 3 premiums.

With each additional \$2.50 select one more premium.

The premiums you select must be written on your order or no plants will be sent. Except when you send us another order you may include premiums overlooked on previous order, if repeat order is mailed in same shipping season.

NOTICE—If we run short on some premiums we reserve the privilege of changing to other stock of equal or greater value.

Full Grown Plants. . .  
with Hundreds of blooms  
2C1—Big, fully developed plants, like above picture. Over 475 varieties, nearly 1/4 million plants when you call at nursery. Big field clumps. Special price!  
**3 for \$1.50**  
(Free mum see front cover)



Most fall orders cannot be shipped before early October or until growth is checked

## ROSA MULTIFLORA THE MIRACLE ASIATIC SHRUB

### A Practical, Living Farm Fence

2H2—A cheap, stock-tight fence, quick, at 40% less cost than woven wire fence. Do not compare with the old time, space, and labor wasting osage orange hedge. Multiflora rose is different—plant as a permanent hedge, but you need not trim and if you ever want to move hedge it is quickly destroyed with 2-4-D or by clipping.

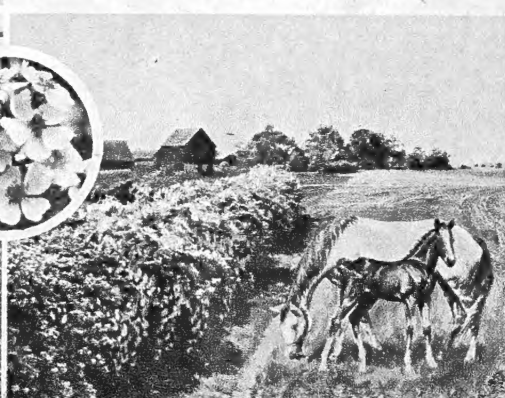
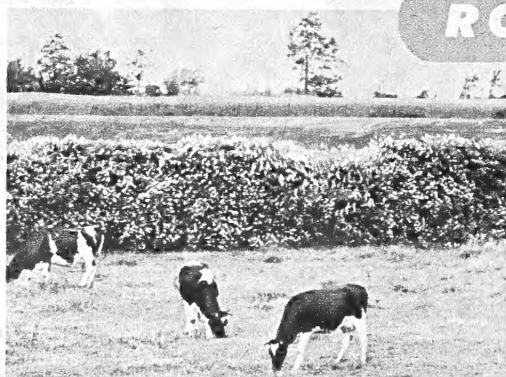
The easily grown plants make excellent cover, nesting facilities, and provide winter food for wild life. The natural propagation and successful wintering of game assures a growing supply for sportsmen.

Recognized and developed by U. S. Soil Conservation Service. Trial fences have been planted in the East, South, Middle West, and North West and proven successful.

The attractive plants grow 6 to 8 feet tall and 5 to 7 feet wide. Present recommendations are to plant 1 foot apart in a single row for livestock fence. The general use of Rosa Multiflora is just beginning but its value for cheap fence, game management, windbreak, protection to soil and crops will last for generations.

BIG DEMAND, WE SUGGEST EARLY ORDERS.

6 to 12 inch	12 to 18 inch	18 to 24 inch
10 for .85	10 for \$1.15	10 for \$1.65
25 for \$1.50	25 for \$2.50	25 for \$3.50
100 for \$4.95	100 for \$7.50	100 for \$12.50
1000 - \$40.00	1000 - \$65.00	1000 - \$110.00





# BUY DIRECT SUPERIOR QUALITY . . . BIG SAVINGS

## IMPORTANT INFORMATION FOR CUSTOMERS WHEN ORDERING

### ORDERS ACKNOWLEDGED

We acknowledge all orders upon receipt of order. Your order is filed by this number. Please keep the acknowledgment slip we send you with your assigned order number. It is difficult for us to give you good service without your order number.

### ORDER ADJUSTMENT

In event of any error, claim or adjustment, it will be necessary for you to return your original order with your letter. If order is not filled completely, balance will follow later or refund will be made. We will be unable to correspond with you about your order unless your original order is returned to us.

### HOW TO ORDER

Use order blanks enclosed. List the variety of plants you want, state catalog number, size and price. Advise DATE you wish your order shipped.

### TERMS AND REMITTANCE

All orders should be accompanied with remittance. Please mail Post Office Money Order, Express Money Order or personal check. Spring Hill cannot be responsible for currency, stamps, war stamps or cash unless sent by registered mail. (Wrap coins securely.) SORRY, C.O.D. ORDERS NOT ACCEPTED.

### WAR STAMPS ACCEPTED

Mail war stamps in payment of your order.

### NO AGENTS OR SALESMEN

We sell direct by mail and at the nursery only. When dealing direct you get full benefit of our guarantee, facilities and experience. Refuse to buy from anyone representing himself or herself as our agent or salesman.

**Important . . .**  
**Please add postage.**  
 (Transportation Notice)—When nursery stock or plants are to be shipped by parcel post, please add 10% for packing and postage. This enables us to give our customers the lowest possible selling price for big, first class plants. If you do not include postage charges, your order will be shipped express collect or we will bill you for the parcel post. All trees over 5 ft. tall will be shipped via express. Ohio customers please add 3% sales tax.

### VISIT THE NURSERY

Gather the family, drive to Spring Hill and view for yourself our growing farms of over 500 acres and our big sales shed stocked with values. Each year, thousands of visitors take advantage of these remarkable savings and reduced prices.



### LOW PRICES

**MAIL YOUR ORDER TODAY** — It's easy, safe and economical. Our high grade plants at comparative prices represent some of the greatest values ever offered. Come, see for yourself or mail your order. Over 1,000,000 plants produced monthly.

### HEALTHY PLANTS

A Certificate of Nursery Inspection awarded Spring Hill Nurseries by the State of Ohio certified apparent freedom from dangerously injurious insects and plant diseases. Only guaranteed healthy plants from Spring Hill.



**H. N. KYLE**

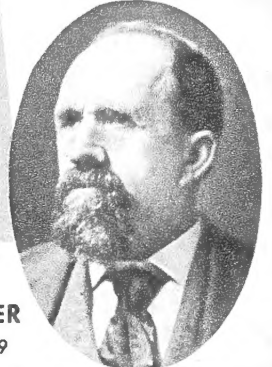
son-in-law, sec'y-treas. 1909 to 1928



**W. F. BOHLENDER**

son and gen. mgr. 1912 to 1936

Continuously operated by One Family for over 100 YEARS



**PETER BOHLENDER**

founder 1849



**TOM KYLE**

President, Gen. Mgr.



**HOWARD KYLE**

Vice-Pres., Secretary

## Thousands of Customers from Coast to Coast

A mere shed in 1889—  
 today 2 full acres of floor space

**YESTERDAY**



**TODAY**



Hundreds of visitors each spring; you are always welcome.

Inside view, America's largest nursery sales shed.

## OUR GUARANTEE TO YOU

We guarantee high quality stock, exactly as represented, government inspected, true to name and to arrive safely in healthy, live growing condition. Any plants that reach you otherwise will be replaced free.

**REPLACEMENTS**—We guarantee our plants to grow, bloom and produce if given intelligent handling, proper planting and reasonable care. Weather conditions, carelessness, and lack of experience by the planter are conditions beyond our control; regardless of this, Spring Hill will replace any plants that fail to grow at half the original purchase price if notice is made One Month after delivery of your order. Please enter complaints immediately. It is mutually agreed that our liability cannot be greater than your original purchase price. **GUARANTEED SATISFACTION.**

**Raise your hopes—with Spring Hill's Quality plants**

Skilled nursery employees use modern equipment.

Power digger—typical of Spring Hill dollar savings methods.



# Spring Hill's Blue Ribbon Quality Fruits

## Delicious Hardy PEACHES

Listed in order of ripening

**GOLDEN JUBILEE 4P1**—High yielding, early yellow freestone peach of exceptional quality, color and flavor.

**EARLY ELBERTA 4P2**—Like Elberta but bears two weeks earlier. Delicious, large, golden-yellow freestone.

**AMBER GEM 4P3**—New!! Big, cling peach unequalled for eating, canning, and huge crops. Planted by the million commercially.

**HALE HAVEN 4P4**—High yielding, early yellow freestone. Fine quality. Bears two weeks before Elberta. Dependable.

**BELLE OF GEORGIA 4P5**—The finest flavored peach of high quality. Superb, rich, creamy-white-red blushed. Freestone.

**J. H. HALE 4P6**—Earlier than Elberta, superior size and flavor. Large, tender, yellow freestone. Superb quality.

**ELBERTA 4P7**—Juicy, golden-yellow freestone. The old reliable, most popular money-making variety.

**LIZZIE 4P8**—Fruit resembles Elberta in size, shape and quality. Very productive. Rated the finest of all late varieties.

### All Season Family PEACH ORCHARD

**4P9**—Spring Hill's branched 2 to 3 ft. trees used in this collection usually bear fruit second year. This is an outstanding offer. One each of the following. No broken collections. See descriptions opposite. 1 EARLY ELBERTA, 1 BELLE OF GEORGIA, 1 LIZZIE, 1 HALE HAVEN, 1 GOLDEN JUBILEE, 1 ELBERTA.

Catalog value \$3.30

**6 for \$2.45**

### New Low PEACH TREE PRICES

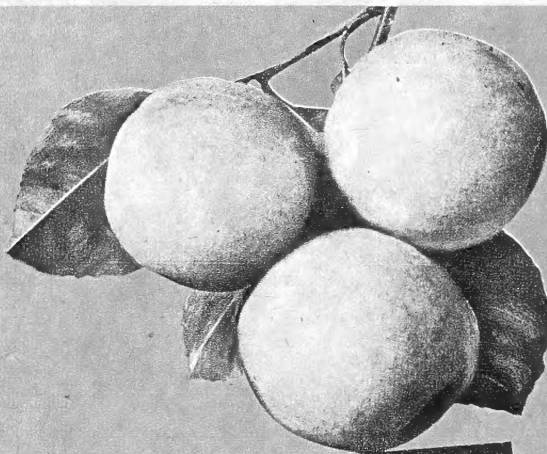
Choice of above 8 varieties of peach trees  
Guaranteed U. S. Standard Grades

Description & Cat. No. See above Age, size, and trunk diameter	Price Each	Price of 2 trees	Price of 5 trees	Price of 10 trees	Price of 25 trees
GOOD, 3-4 ft., 7/16 to 9/16 in.	.69	1.30	3.10	5.95	14.25
BETTER, 4-6 ft., 9/16 to 11/16 in.	1.15	2.20	5.35	10.50	25.60
BEST, 5-6 ft., 11/16 in. & up, Quick crop giants	1.75	3.40	8.35	16.50	—

### Sure Crop NECTARINES

**4P10**—Unusual, delicious, sweet fruits with thin, smooth skin like a plum. Mellow, rich, juicy, flesh like peaches. Unequaled for eating, fresh or canned. Trees and fruit resemble peaches and can be grown where peach trees grow. Trees bear young—usually 2nd year.

**3 to 4 ft., \$1.00 each; 2 for \$1.90; 6 for \$5.40**  
**5 to 7 ft., \$1.95 each; 2 for \$3.80; 5 for \$9.35; 10 for \$18.50.**



### Spring Hill's Hardy APRICOTS

**MOORPARK—4A11**—Extra large freestone, golden-orange fruit; sweet and juicy. Recommended.

**SUPERB—4A12**—Unsurpassed for canning, eating, drying; delicious, medium-size, freestone.

2 yr., 2 to 3 ft., 89c each; 2 for \$1.70; 5 for \$3.90

2 yr., 4 to 5 ft., \$1.60 each; 2 for \$3.10; 5 for \$7.60

3 yr., 5 to 7 ft., quick crop, \$2.50 each; 5 for \$11.95

**2 for \$4.89**

America's Favorite Varieties

## CHERRIES

**MONTMORENCY (Sour cherry) 4C14**—Universally recognized the best sour cherry. Bears very young; large fruit. Highest yielding canning and pie cherry.

**EARLY RICHMOND (Sour cherry) 4C15**—First sour cherry to ripen. Medium-size fruit, unsurpassed for pies; requires less sugar for canning.

**ROYAL ANN (Sweet cherry) 4C16**—Popular sweet cherry for canning and eating. Golden-amber with red blush. Large, firm, juicy. Enormous crops.

**BLACK TARTARIAN (Sweet cherry) 4C17**—Nation-wide popularity. Large, heart-shaped, rich dark purple, famous ox-heart (almost black) fruits. Sweet flavor.



Art Courtesy Pillsbury Foods

### Prices of CHERRY TREES

State size, name and catalog number.  
Alike or Assorted

Description see above Size and trunk diameter	Price Each	Price of 2 trees	Price of 5 trees	Price of 10 trees
3 ft., 7/16 to 9/16 in.	1.15	2.20	5.25	9.95
3 1/2 to 5 ft., 9/16 to 11/16 in.	1.79	3.50	8.50	16.70
5 to 7 ft., 11/16 & up. Quick crop	2.50	4.90	12.00	23.75

### Prof. Hansen's BUSH CHERRIES

**4C18**—Dwarf, quick bearing, attractive shrub-like plants with large, plum-shaped fruits the size of cherries. Heavy yielding; fine for jams, jellies, eating, etc. **3 to 4 ft. bearing age, \$1.15 each; 3 for \$3.30. 1 1/2 ft. size, 55c each; 3 for \$1.50; 10 for \$4.50.**

**LOW AS 45c EACH IN LOTS OF 10**



# BIG SAVINGS • PLANT FOR ECONOMY

## New and Better APPLES

Listed in approximate order of ripening.

**YELLOW TRANSPARENT 5A1**—Very early. Dependable, high yielding, golden variety. Will grow fast and bear young.

**EARLY LODI 5A2**—Improved, large, high quality, golden apple. Splendid to cook and eat. Recommended.

**WEALTHY 5A3**—Red-striped, summer apple. Heavy yielding, fine flavor. High yielding, fine for cooking.

**GIANT RAMBO 5A4**—Big, red-striped apples in abundance. Unsurpassed for eating; famous for flavor.

**DOLGA CRAB 5A5**—High yielding; scarlet fruit. Excellent for jams and jellies. Trees semi-dwarf. Bears young.

**Mc INTOSH 5A6**—Large red fruit with snow-white flesh. Tender, juicy, long keeping, thin-skinned apples.

**JONATHAN 5A7**—High quality bright red apples to cook or eat. Dependable. Fine for cooking and eating.

**GRIMES GOLDEN 5A8**—Big, yellow, fall ripening apples. Favorite for cooking and eating. Bears young, heavy bearer.

**DBL. RED DELICIOUS 5A9**—Famous for color, mellowness, flavor and big crop. For eating or cooking this variety is tops.

**YELLOW DELICIOUS 5A10**—Shape, size and quality of red delicious. Bears young and large crops.

**STAYMEN WINESAP 5A11**—Famous for size, quality, productiveness; cooking and eating. Reliable money-making variety.

**DBL. RED WINESAP 5A12**—Double red strain. Similar in shape, size, flavor and yields to Staymen Winesap.

Guaranteed U. S. Standard Grades  
All Varieties alike or assorted

### Reduced APPLE TREE PRICES

Description & Cat. No. see above Age, size and trunk diameter	Price Each	Price of 2 trees	Price of 5 trees	Price of 10 trees
GOOD, 2 yr., 3-4 ft., 7/16 to 9/16 in.	.75	1.40	3.35	6.50
BETTER, 2 yr., 4-5 ft., 9/16 to 11/16 in.	1.19	2.30	5.60	11.00
BEST, 3 yr. 6-7 ft., 11/16 in. up, Quick crop	1.95	3.80	9.35	18.50

### QUINTUPLET APPLE TREE (5 Kinds of Apples on One Tree)

**5A14**—Like a complete orchard, yet all you need is one tree. This amazing tree will yield ripe apples from June to October. Five different apples grafted on one tree. Self pollinating. beautiful tree. Each guaranteed a good assortment of summer, fall, winter varieties listed on page 5. **Big, sturdy, well branched plants,**

4 to 5 ft.,  
**\$2.75 ea; 3 for 7.80**  
5 to 7 ft.,  
**\$3.50 ea; 3 for 9.95**

## Spring Hill's Quality PEARS

**MAXINE 5P19**—Extra large, excellent quality. Sells at premium prices.

**DUCHESS 5P20**—Large, sweet, mellow, mid-season pear. Large yields.

**BARTLETT 5P21**—Universally popular; sweet, delicious golden fruits.

**IMPROVED KIEFFER 5P22**—Our best winter pear; excellent for canning and eating.

**SECKEL 5P23**—The well known sugar pear, prized for its flavor and eating.

### PEAR TREE PRICES

State size, name and catalog number  
Choice of 5 varieties

Catalog No. Size	Descriptions Above Trunk Diameter	Price Each	Price of 2 trees	Price of 5 trees	Price of 10 trees
4 to 5 ft.	9/16 to 11/16 in.	1.19	2.30	5.60	11.00
6 to 7 ft., quick crop,	7/8 to 1 inch	1.85	3.60	8.85	17.50

### Big Bartlett Pears on Dwarf Trees

**5P18**—Dwarf Bartlett Pear. Full size fruit on beautiful miniature trees. Will bear first or second year, special dwarfing root stock make trees blight resistant. Ideal for city lot planting. Reduced price. Large 3 yr., 3 to 4 ft. tall. \$2.85 each;

**2 for \$5.50**  
**6 for \$15.90**



**FREE PEAR TREE**

### ALL SEASON HOME ORCHARD

Fresh apples nearly every day in the year. You get 5 apple trees plus one pear tree, see sizes and prices below:

**1 YELLOW TRANSPARENT, 1 GRIMES GOLDEN, 1 DOUBLE RED WINESAP, 1 WEALTHY, 1 DOUBLE RED DELICIOUS**  
No. 5A15—3-4 ft. size,  
5 apple trees plus 1 pear tree. **\$3.25**  
No. 5A16—4-6 ft. size,  
5 apple trees plus 1 pear tree. **\$5.50**  
No. 5A17—6-7 ft. size,  
5 apple trees plus 1 pear tree. **\$9.25**

### America's Finest Hardy PLUMS



**BURBANK 5P24**—Big, bright red plum fruit of excellent quality, profitable crops.

**YELLOW EGG 5P25**—Rich golden plums with delicious sugar flavor. Fruit extra large.

**GIANT PRUNE 5P26**—Big, dark blue freestone; sweet, mellow, yellow flesh.

**STANLEY PRUNE 5P27**—Best large purple freestone plum unsurpassed quality, size.

**IMPROVED SHROPSHIRE DAMSON 5P28**—Heavy fruiting bright blue freestone strain.

**GIANT RED PRUNE 5P29**—Extra large and sweet. Mammoth size, superb quality.

### Reduced PLUM TREE PRICES

Choice of above 6 Varieties described above.

2 yr., 3 to 4 ft.,

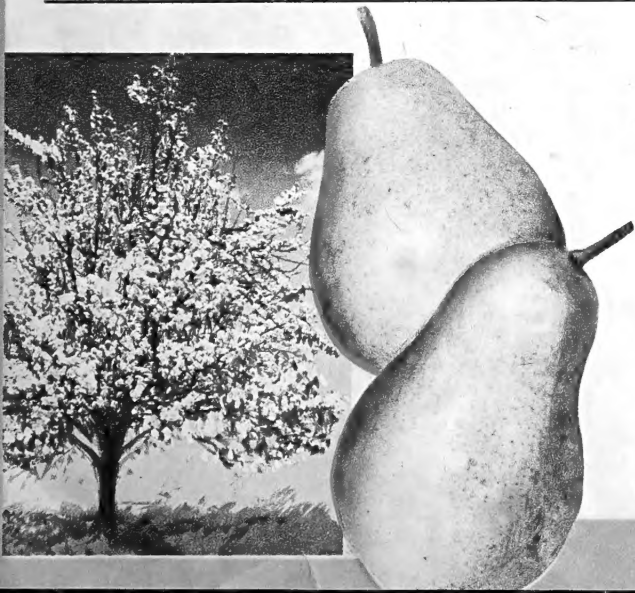
**\$1.19 each; 2 for \$2.30;**

**5 for \$5.60**

3 yr., 5 to 7 ft., 11/16 in. up,

**\$1.85 each; 2 for \$3.60;**

**5 for \$8.85**





# Big Beautiful PEONIES

EXPERTLY SELECTED FROM  
THE WORLD'S FINEST

Peonies are one of the easiest to grow and most satisfactory large, fragrant flowers for decorations. Blooms for many weeks during May and June. Hardy plants last for many years. Planting directions free with each order. All peonies listed are large 3 to 5 eye plants.

## BARONESS SCHROEDER

6P1—Delicate shell-pink buds open into huge, double white blooms. Recommended. \$1.15 each; 3 for \$2.95.

## KARL ROSENFELD

6P2—Brilliant velvety-crimson of stately habit. Unsurpassed for size, shape and color. 85c each; 3 for \$2.25.

## MONS JULES ELI

6P3—Full, double, light rose-pink of immense size with silvered centers. A masterpiece. 90c each; 3 for \$2.40.

## PRES. ROOSEVELT

6P5—Large, striking bright red variety. Richly fragrant; blooms mid-season. Highly recommended for garden as a cut-flower and show flower. 95c each; 3 for \$2.55.

## SOLANGE

6P6—Like color of coffee with cream. Immense salmon-buff blooms. Unusual and beautiful. \$1.55 each; 3 for \$4.35.

## SHAWNEE CHIEF

6P4—(A new black or dark red peony) Huge dark, brilliant crimson maroon. This great new double peony is a very worthy introduction. Sold last year for \$4.00 ea. Reduced prices.

\$1.95 each; 2 for \$3.70;  
5 for \$9.00.

## Giant Peony GARDEN SPECIAL

6PS7 (Labeled)

• 1 President Roosevelt • 1 Karl Rosenfield • 1 Shawnee Chief • 1 Baroness Schroeder • 1 Mons Jules Eli • 1 Solange

\$7.30 certified catalog value

All 6 for \$6.45

## MEMORIAL DAY Peonies

Most dependable, early blooming, free flowering, most planted commercial varieties. Usually in flower before Memorial Day.

## FELIX CROUSSE

6P8—Huge, globe-shaped, red.

## EDILUS SUPERBA

6P9—Big, rosy-pink, silver reverse.

## FESTIVA MAXIMA

6P10—Ivory-white, crimson edges.

Choice of Memorial Day Peonies,  
75c each; 3 for \$1.95



## Single and Collarett PEONIES

### PRINCE OF DARKNESS

6P11—Brilliant dark red petals with center dome of yellow.

85c each; 3 for \$2.25

### MRS. ALBERT DUNLAP

6P12—(Improved Primevera) The yellow peony. Creamy yellow petals fade to pearly white, big yellow centers. Unusual, beautiful.

\$1.45 each; 3 - \$3.95



## Stately LILIES for Home and Garden Decoration

Hardy garden lilies of exotic splendor for touches of Oriental charm. All bulbs blooming size that will flower next summer. Winter hardy, easy to grow varieties.

### DOUBLE TIGER LILY

6L21—(Tigress fl. Pl.) Considered the finest and most beautiful double lily in existence. Rich salmon-orange petals handsomely spotted. Big, 6 to 7 inch blooming size, 60c each; 3 for \$1.50; 6 for \$2.75.

### DREAM LILY

6L22—(Phillippeneuse) For late summer and fall bloom. Very popular with lovely long 6 to 8 inch white flowers in profusion. Blooms excellent for cutting. 5 to 6 inch blooming size, 65c each; 3 for \$1.65.

### MADONNA LILY

6L23—One of the loveliest white lilies, blooming in early spring when its delightful fragrance is appreciated in bouquets and in the garden. Big blooming size, 20-22 c.m. bulbs, 55c each; 3 for \$1.35.

### REGAL LILY

6L24—The best known, most popular, easy to grow lily. The beautiful blooms are white flushed pink, with creamy golden throats. 5 to 6 inch bulbs, 2 for 60c; 6 for \$1.40; 12 for \$2.50. 6 to 8 inch bulbs, 2 for 75c; 6 for \$1.95; 12 for \$3.45.

### CORAL LILY

6L25—(Tenuifolium) Most vivid, deep, waxy scarlet flowers fine for bouquets. Early blooming, easy to grow; bulbs multiply. Jumbo, 4 to 5 inch blooming size, 40c each; 3 for \$1.15; 6 for \$1.95.

### RED FUNNEL

6L26—Extremely free flowering with big, upright orange-red blooms on 18 to 24 inch stems. Often 25 flowers on a stem; bulbs are hardy and easy to grow. Blooming bulbs, 6 to 7 inch, 60c each; 3 for \$1.50; 6 for \$2.75.

Spring Hill Nurseries  
Tipp City, Ohio

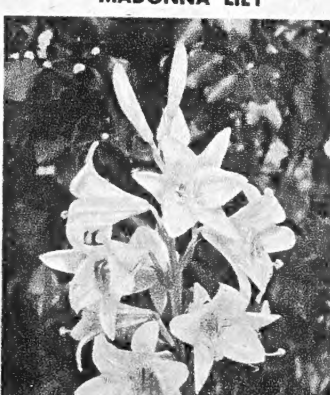
DREAM LILY



RED FUNNEL



MADONNA LILY



## Fragrant Giant Flowering HYACINTHS

Spring Hill's Holland grown Hyacinths are the finest obtainable. All are bold, strong colors exquisitely fragrant, scenting the entire garden or home. Few flowers equal their brilliance in early spring. Large, plump bulbs excellent for outdoor planting, also may be forced in pots of soil or water glasses indoors. Fall is the only satisfactory time to plant hyacinth bulbs.

QUEEN OF THE BLUES—6H14—Sky blue.

LA VICTORIA—6H15—Most brilliant red.

LADY DERBY—6H16—Bright rose-pink.

L'INNOCENCE—6H17—Pure, snow-white.

CITY OF HARLEM—6H18—Pure golden-yellow.

KING OF THE BLUES—6H19—Rich, dark blue.

Guaranteed to bloom large bulbs 15 - 16 c.m.

3 bulbs 65c • 6 bulbs \$1.15

12 bulbs \$2.10 • 100 bulbs \$16.00

(25 or more bulbs of a kind at hundred rate)

## Mixed Hyacinth Bulb Special

(New, low prices)

6H520—Fine, imported Holland grown bulbs in mixture of red, white, pink, yellow and blue. Big savings for those who care little for names. Blooming size, 14 to 15 c.m. bulbs,

6 for 90c • 12 for \$1.50

25 or more of a kind at 100 rate.



**New Black PEONY**

SHAWNEE CHIEF—7PI—Dark brilliant crimson-maroon. Listed \$4.00 each last year. Prices greatly reduced. (Description see opposite page)

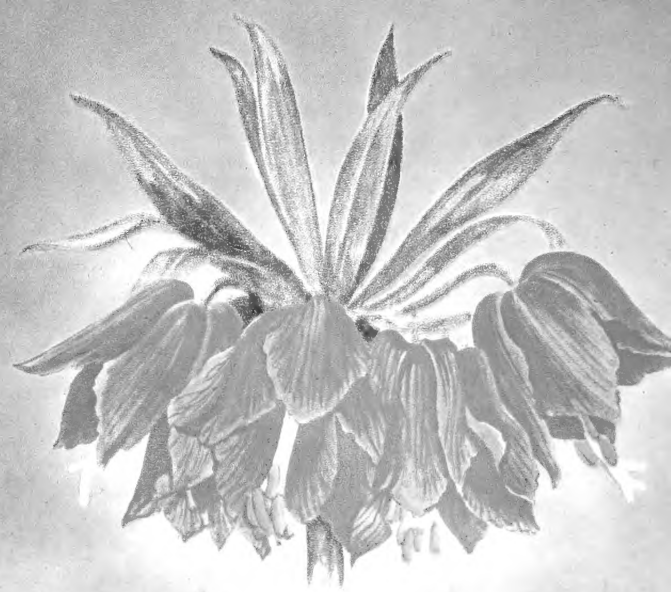
**\$1.95 each**



**Mixed HYACINTH Bulb Special**

7H4 • See description and prices opposite page.

**12 for \$1.50**



**CROWN IMPERIAL**

7B2 (*Fritillaria Imperialis*)—The stately blooms attract immediate attention. Vigorous plants often grow 3 ft. tall and carry huge trusses of vivid orange-scarlet, bell-shaped blooms in great profusion each spring. They are perfectly hardy and may be left undisturbed for years. Plant this fall for flashy blooms in your garden next spring. Jumbo blooming size (New reduced prices),

**50¢ each • 3 for 1.35 • 10 for 3.95**



**BLUE BELLS**

7B3 (*Mertensia Virginica*)—Delightful, early and long blooming spring flowering bulbs. Perfectly hardy and easily grown. Lovely porcelain blue flowers about 1 inch long are borne in pendant clusters with pink buds at opening time. Wonderful for planting in semi-shade or in mixed planting with King Alfred Daffodils. Blooming size roots,

**30¢ each • 3 for 69¢**

**6 for 1.15 • 12 for 1.95 • 100 for 15.00**





# Wonderful Hardy GRAPES



**Large Bearing Age Grapevines**  
 Why wait? You can enjoy grapes from your own vines next fall. Plant now! The vines we will send you have already produced one crop of fruit. Trimmed for planting. Choice of the following. **Fredonia—8G7. Concord—8G8. Niagara—8G9.**

**90c each** 2 for \$1.60  
 6 for \$4.59

**Bearing Age Vineyard Bargain**  
**8GS10**—Enjoy grapes in your own garden next fall. One each **Fredonia, Early Blue, Niagara, Best White, Concord, Favorite Blue.** Save!

**3 for \$2.35**

**NIAGARA 8G1**—Most dependable favorite, hardy, white grape. 2 yr., 42c each; 3 for \$1.10. 3 yr., 55c each; 3 for \$1.45.

**CACO 8G2**—Delicious, honey-sweet, large red fruit. 2 yr., 50c each; 3 for \$1.35. 3 yr., 65c each; 3 for \$1.75.

**FREDONIA 8G3**—Early ripening; vigorous growing blue grape. 2 yr., 45c each; 3 for \$1.15. 3 yr., 55c each; 3 for \$1.45.

**GOLDEN MUSCAT 8G4**—Big, yellow California native grape cross. 2 yr., 70c each; 3 for \$1.95. 3 yr., 90c each; 3 for \$2.50.

**SEEDLESS CONCORD—8G5**—Smaller but sweeter and better to eat than regular Concord. Occasionally a few seeds but most all berries are seedless. Recommended novelty for home planting. 2 yr., 90c each; 3 for \$2.50. 3 yr., \$1.15 each; 3 for \$3.30.

## Home Vineyard Special

**8G6**—One red, white, and blue. Excellent selection for home and garden.

- 1 Red Caco, 2 yr. . . . . 50
- 1 White Niagara, 2 yr. . . . . 40
- 1 Blue Concord, 2 yr. . . . . 35

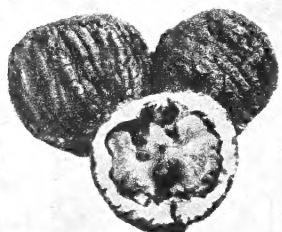
Catalog value . . . \$1.25

SAVE 20%

All 3 for **98c**

**CONCORD**  
 America's Finest Grape  
**8GV11**—Most popular grape in the world. Big, dark blue, sweet, juicy fruit in abundance.  
 2 yr., 35c each; 3 for 79c;  
 6 for \$1.40; 25 for \$4.95.  
 3 yr., 45c each; 3 for \$1.15; 10 for \$2.85.

# Finest Hardy . . . High Yielding NOVELTY NUT TREES



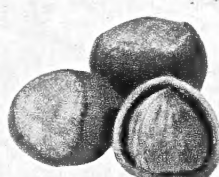
**Black Walnut**

**8NT12**—Make excellent, sturdy, tall, ornamental trees that yield heavily each year. Valuable for timber, shade and nuts with famous black walnut taste. 2 ft. tall, 2 for 36c; 10 for \$1.45. 3 ft. tall, 3 for 75c; 10 for \$1.95. 4 to 5 ft. tall, \$1.25 each; 3 for \$3.45.



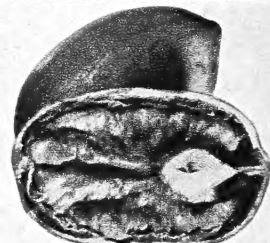
**Butternut**

**8NT14**—Big, pecan-shaped nuts with rich, white meat of wonderful flavor. Hardy, fast growing, high-yielding trees. Valuable for timber and shade. 2 ft. size, 40c each; 2 for 75c; 10 for \$3.45. 3 ft. size, 60c each; 3 for \$1.65. 5 ft., \$1.85 each; 3 for \$5.25.



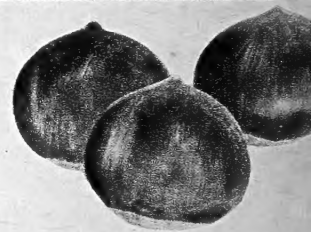
**American Hazel Nut**

**8NT15**—Quick bearing, dwarf growing. Easy to crack, large, sweet kernels, shell out whole. Fine for shrub borders or hedges. 1 ft. size, 40c each; 2 for 75c; 6 for \$2.10; 25 for \$8.25; Fruiting age, 3 ft. \$1.25 each; 3 for \$3.45; 6 for \$6.60.



**Hardy Pecan**

**8NT16**—Beautiful, rapid growing trees that are sturdy. Bushels of fine quality, plump pecans that are easy to crack. Northern grown strain. 2 ft. size, 69c each; 3 for \$1.85; 10 for \$5.75. 3 to 4 ft. size, \$1.50 each; 3 for \$4.25. Heavy 5 to 7 ft., \$2.75 ea.; 3 for \$6.75.



**Manchurian Chestnut**

**8NT17**—(*Castanea Molissima*)—Grows successfully where native trees have died. Bears young. Big, sweet nuts compare in size and quality to native varieties. 2 ft. size, 79c each; 3 for \$2.25; 12 for \$8.40. Fruiting age, 5 ft., \$2.75 ea.; 3 for \$7.50.

## Currants

**RED LAKE 8C18**—Recommended for big crops of large, red fruit. Makes beautiful, fine flavored jelly. 2 yr. 60c each; 3 for \$1.50; 6 for \$2.65. 3 yr. fruiting age, 85c each; 3 for \$2.40; 6 for \$4.50.

**WILDER 8C19**—The favorite currant for years. Big, bright red berries. Vigorous grower and heavy producer. 2 yr. 50c each; 3 for \$1.20; 6 for \$2.15. 3 yr. fruiting age, 75c each; 3 for \$2.10; 6 for \$3.90.

### JELLY SPECIAL 8B22

One each (unlabeled)

All 4 for \$2.89

- 1 Wilder currant, 75c
- 3 yr. . . . .
- 1 Red Lake currant, 85c
- 3 yr. . . . .
- 1 Champ. gooseberry, 90c
- 3 yr. . . . .
- 1 Red Jacket gooseberry 3 yr. . . . . 80c

Catalog Value . . . . \$3.30

**4 for \$2.89**

## Gooseberries

**CHAMPION 8G20**—Dependable; large fruiting; vigorous growing bright green fruit that turns gold when ripe. 2 yr. 70c each; 3 for \$1.80; 6 for \$3.30. 3 yr. fruiting age, 90c each; 3 for \$2.40; 6 for \$4.50.

**RED JACKET 8G21**—Large, red berries; sweet when ripe, delicious for pies, sauces, jellies and cooking. 2 yr. 65c each; 3 for \$1.65; 6 for \$2.95. 3 yr. fruiting age, 80c each; 3 for \$2.15; 6 for \$3.90.





**Guaranteed  
Plants**

**Buy with  
Confidence**



**Giant  
Tasty RHUBARB**

**CHIPMAN'S CANADA RED 9R1**—Newest and finest rhubarb. The flesh is red from top to bottom and retains its color when cooked. Seedless and the sweetest—save on sugar. Pull all season, the long thick stalks are so tender. Vigorous and productive. Hand cut No. 1 crown divisions. **89c each; 3 for \$2.50; 6 for \$4.65; 25 for \$18.75.**

**GIANT McDONALD 9R2**—Massive stalks 2 to 3 times larger than common rhubarb. Also more red, sweeter, and the plants are seedless. Tremendous yields. Spring Hill guarantees true, imported strain. Hand cut No. 1 crown divisions. **69c each; 3 for \$1.85; 6 for \$3.50; 25 for \$13.75.**

**VICTORIA- 9R3**—The standard commercial variety for many years; grown from re-selected seed. **2 yr. whole roots, 3 for 65c; 6 for \$1.10; 25 for \$3.75.**

**Rhubarb Special 9RS4**

• 2 Chipman's Red • 1 Giant McDonald  
All **3** (unlabeled) **\$2.20.**

**Jumbo Quick-Crop RHUBARB**

Roots or divisions are much larger with more eyes so they will produce more and larger stalks quicker.

**CHIPMAN'S CANADA RED 9R5**—Jumbo division, **\$1.35 each; 3 for \$3.75.**

**VICTORIA 9R6**—Quick crop, jumbo whole roots, **50c each; 3 for \$1.35.**

**GIANT McDONALD 9R7**—Jumbo division, **\$1.00 each; 3 for \$2.70.**

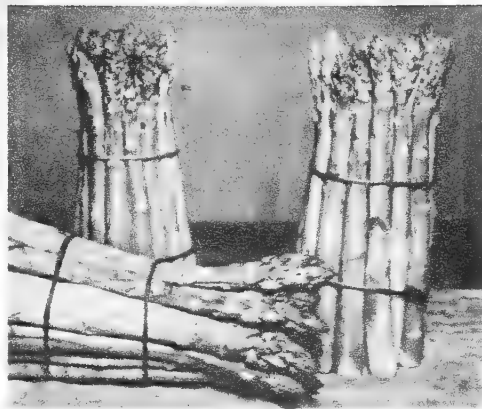
**Quick-Crop Rhubarb Garden 9RS7**

• 2 Chipman's Red • 2 McDonald  
Regular **\$4.70** catalog value  
All 4 for  
(unlabeled) **\$3.95**

**"Easy to Subscribe"**

**MAGAZINE SERVICE**

Enclosed in this catalog are subscription order blanks making it easy for you to order your favorite magazines at lowest prices. Save time, trouble and expense and be assured of safe, prompt service. Merely send your order for the magazine you want to FARM JOURNAL, Subscription Service Dept., Farm Journal Bldg., Philadelphia 5, Pennsylvania. Mail coupon with check, money order or cash, covering the subscription prices of the magazines you select for your entire family.



It's easy to grow your own

**ASPARAGUS**

**WASHINGTON- 9A8**—Grows well in most all soils and locations. When cared for, beds improve with age and last for many years. Fresh cut from your garden is best. Big annual yields. Giant Washington was developed under auspices of U. S. Dept. of Agriculture and is considered the leading variety. Practically immune to rust and has longest cutting period. Giant size, straight, tender, dark green stalks, tinged purple.

Size	6	12	25	100
1st class, 1 yr.	.49	.80	1.25	3.05
1st class, 2 yr.	.75	1.15	1.98	5.95
Jumbo, 3 & 4 yr.	.89	1.49	2.65	8.75



**MAMMOTH SAGE**

**9S11**—Famous Holt strain. Dried leaves used for seasoning sausage, dressing, etc. Blue flowering hardy plants grow for years without replanting. **2 yr., 39c each; 3 for \$1.10. 1 yr., 27c each; 3 for 69c; 6 for \$1.25.**



**Giant Thornless  
BOYSENBERRIES**

**9B9**—The biggest berry ever developed. Large, fancy fruit often 1½ inches long, of beautiful maroon-color. Superb quality. Excellent for eating, canning, freezing, juices, etc. **No. 1 plants, 3 for 85c; 6 for \$1.40; 12 for \$2.45; 25 for \$3.95; 100 for \$14.75.**

**Quick Crop Thornless  
BOYSENBERRY**

**9B10**—Larger size, better rooted. **2 for 80c; 4 for \$1.45; 10 for \$3.25; 25 for \$7.50.**



**PAW PAW**

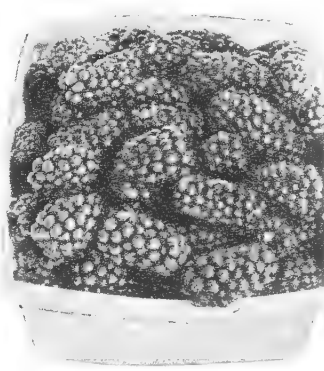
**9S12**—(Custard Apple) Handsome, dwarf trees. Attractive cinnamon-colored flowers. beautiful foliage. Large golden-fleshed banana-like fruit usually 6 to 8 inches long. Most people like to eat the fruit raw. **2 to 3 ft., 90c each; 3 for \$2.45.**



**Dewberries**

**LUCRETIA 9D14**—Most desirable and profitable early berry. Larger than blackberries, first to ripen. Big, glossy, black fruit brings high market prices. First grade plants, **6 for \$1.00; 12 for \$1.45; 25 for \$2.25; 100 for \$8.40; 500 for \$35.00.**

**QUICK CROP LUCRETIA 9D15**—Larger size, better rooted plants. **5 for \$1.15; 10 for \$1.85; 25 for \$3.75.**



**Blackberries**

**ELDORADO 9B16**—Hardy, dependable variety. Big crops of juicy, highly-flavored fruit. Excellent for freezing, juice, jams, pies and canning. **6 for \$1.10; 12 for \$1.55; 25 for \$2.50; 100 for \$9.50; 500 for \$40.00.**

**QUICK CROP ELDORADO 9B17**—Larger size, better rooted plants. **5 for \$1.35; 10 for \$2.25; 25 for \$4.50.**

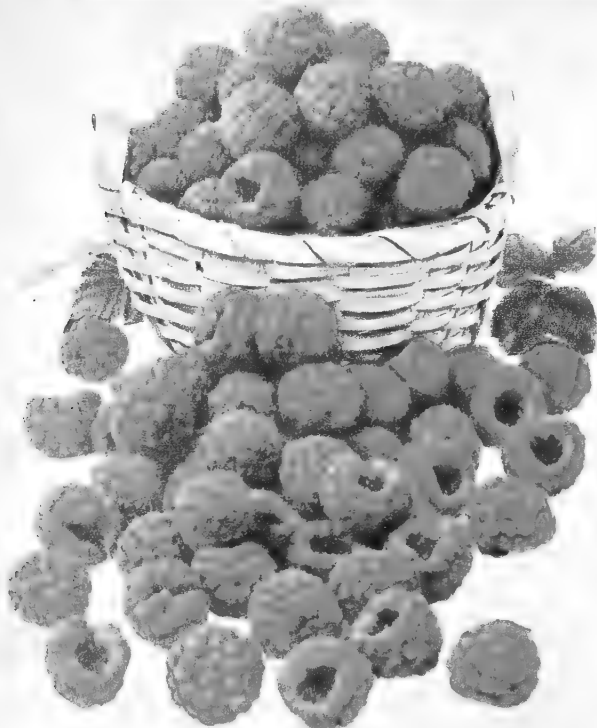
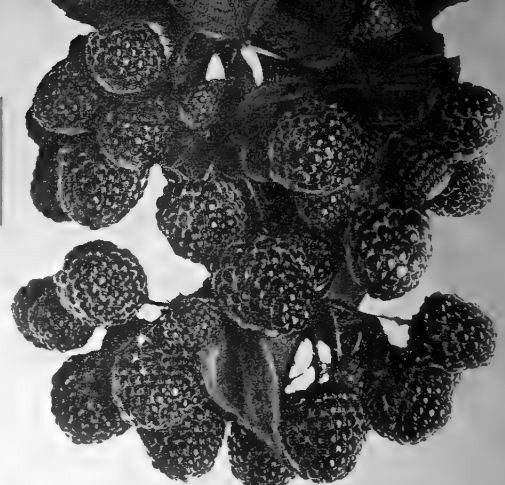


**Elderberries**

**ADAM'S ELDERBERRY 9E18**—Attractive, tall growing shrubs for your yard or garden. Heavy fruiting, large clusters of large, juicy berries. Makes splendid pies, sauces, jelly, juices, wines, etc. Far superior to the wild and common varieties. Spring Hill's high yielding berries are worth more money. **Fruiting age, 3 ft., 98c each; 2 for \$1.85. 2 ft., 65c ea., 3 for \$1.75; 6 for \$3.35.**

Healthful, Profitable  
Best Varieties

# RASPBERRIES



## CUMBERLAND

**10R1—(Black Raspberry)** The most popular variety for years. Select, high-yielding, large fruiting strain. Top grade tip plants, 10 for \$1.25; 25 for \$2.25; 50 for \$4.15; 100 for \$7.50.

### Quick Crop Cumberland

**10R2—Larger size, 1 year older, stronger rooted.** 5 for \$1.15; 10 for \$1.90; 25 for \$3.25.

## NEW LOGAN

**10R3—(Black Raspberry)** Rated the best variety for yields, quality, hardiness and disease resistant. Top grade tip plants, 10 for \$1.25; 25 for \$2.25; 50 for \$4.15; 100 for \$7.50.

### Quick Crop New Logan

**10R4—Larger size, 1 year older, stronger rooted.** 5 for \$1.15; 10 for \$1.90; 25 for \$3.25.

## THE NEW BRISTOL

**10R5—(Black Raspberry)**—Winning in popularity by growers in all sections. Strong, healthy productive plant. Extra large, glossy, black berries. Highly recommended for home and commercial plantings to freeze, eat fresh or cook. 5 for 90c; 10 for \$1.50; 25 for \$2.50; 50 for \$4.50; 100 for \$7.85; 500 for \$27.50; 1,000 for \$47.50.

### Quick Crop Bristol

**10R6—One year older, larger size, strong rooted.** 5 for \$1.25; 10 for \$2.15; 25 for \$4.00.

## GIANT LATHAM

**10R7—(Red Raspberry)** Universally rated the best, big, high quality variety. Extra select 1st grade plants. 10 for \$1.65; 25 for \$3.50; 50 for \$6.50; 100 for \$11.00.

### Quick Crop Latham

**10R8—Larger size, stronger rooted.** 5 for \$1.25; 10 for \$2.15; 25 for \$4.00.

## EVERBEARING INDIAN SUMMER

**10R9—(Red Raspberry)** Our finest spring and fall bearing raspberry. Large, sweet fruit of highest quality. Very popular. 10 for \$1.90; 25 for \$3.75; 50 for \$7.00; 100 for \$12.50.

### Quick Crop Indian Summer

**10R10 Jumbo plants, 3 for 85c; 6 for \$1.50; 12 for \$2.65.**

## SODUS

**10R11—(Purple Raspberry)**—This new hybrid cross of red and black raspberries is considered the heaviest yielding of all raspberries. Big, plump, firm berries do not crumble. Attractive, tart, juicy fruit with distinctive delicious flavor. Profitable market variety. 5 for \$1.20; 10 for \$2.00; 25 for \$3.50; 50 for \$5.90; 100 for \$10.25; 500 for \$37.00.

### Acid Peat Moss for Blueberries

**10PM12—Blueberries prefer acid soil with abundance of organic matter as rotten manure, peat, or compost. Spring Hill offers and recommends Acid Peat for Blueberries. Highest grade Horticulture Acid peat, \$1.00 per bag; 3 bags \$2.50.**

## Giant BLUEBERRIES

New giant U. S. Dept. of Agr. cultivated blueberries famous for size, flavor, profit and beauty. Beautiful clusters of pink buds and white bell-shaped flowers are followed by the sapphire blueberries in big clusters, often as large as grapes. Two or more varieties should be planted together for good yields. Blueberries require acid soil. Use peat moss or decomposed vegetable matter mixed with aluminum sulphate if soil is sweet. Plants last a lifetime. Easy to pick, no thorns. Your choice of

- CABOT—10BB14—Early.**
- RANOCAS—10BB15—Mid-season.**
- JERSEY—10BB16—Late.**

### Low Blueberry Prices

Plant 2 or more for cross-pollination. Your choice of 3 varieties listed.

Well branched and blooming size. Height and age.	Price Each.	Price for 2	Price for 4	Price for 6	Price 12
Good, 2 yr., 6 to 12 inches.	1.00	1.59	2.85	3.75	6.90
Better, 2 yr., 18 inches.	1.55	2.70	4.95	6.98	12.45
Best, 3 yr., 2-3 ft. (fruiting age)	2.25	3.95	7.60	10.95	21.95



### Nanking Cherry

**10T17 — (Prunus Tomentosum)** Fine spreading, dwarf growing (8 to 10 ft.) Japanese cherry with lovely shell pink buds, delicate white blooms and bright red cherries—delicious to eat and fine for cooking. Perfectly hardy. Beautiful and ornamental for home gardens. 3 yr. 2 ft. size. 70c ea.; 3 for \$1.75.



### Service Berry

**10F18 - (Amelanchier)** — Beautiful shrubby plants grow 8 to 11 ft. tall with white blooms in early spring. Nice in any mixed shrub planting. Yields an abundance of rich, dark red apple-shaped fruits, splendid for eating and cooking. 1 1/2 ft. size, 60c each; 3 for \$1.50. 3 ft. size, 80c each; 3 for \$2.20.

SPRING HILL NURSERIES, Tipp City, Ohio  
Guaranteed Plants Buy with Confidence

AMERICA'S  
FINEST VARIETIES

# STRAWBERRIES

Note—All strawberry plants fresh dug and shipped Oct. 10th or later. Sorry plants are not well enough developed for Aug. and Sept. shipment.

## Premier

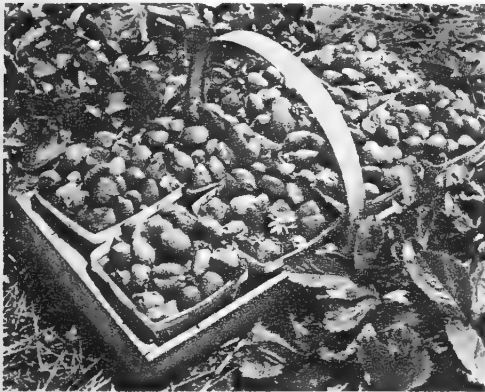
1151—Dependable, extra early, heavy yielding berry. Most planted of all varieties. Large, bright red, sweet berries of highest quality. 25 for \$1.00; 50 for \$1.65; 100 for \$2.75; 200 for \$4.80; 500 for \$8.95; 1,000 for \$15.00.

## Fairland

1152—Large, firm, bright red berries ripening in mid-season a few days after Premier. A vigorous grower. 25 for \$1.25; 50 for \$2.00; 100 for \$3.50; 200 for \$6.25; 500 for \$11.25; 1,000 for \$19.50.

## Senator Dunlap

1154—Fine for freezing. Dependable, a sure bearer, tremendous yields of large, high quality berries. A favorite for canning. 25 for 75c; 50 for \$1.25; 100 for \$2.35; 200 for \$3.75; 500 for \$7.50; 1,000 for \$12.00.



## Robinson (Scarlet Beauty)

1153—Largest and fanciest; outstanding, new, giant fruiting strawberry. Big, glossy, scarlet-red to the heart; sweet, juicy, delicious. Recommended. 25 for \$1.00; 50 for \$1.65; 100 for \$2.75; 200 for \$4.80; 500 for \$8.95; 1,000 for \$15.00.

### SPRING HILL'S

## Family Patch Special

No. 115G5

25 Superfection . . . \$1.75	25 plants each
25 Giant Mastadon 1.65	labeled
25 Premier . . . . . 1.00	All 150
25 Fairland . . . . . 1.25	for only
25 Senator Dunlap .75	
25 Scarlet Beauty. 1.00	

**\$4.75**

Catalog value . . \$7.40

**BIG SAVINGS**



## EVERBEARING STRAWBERRIES

### Everbearing Mastadon

1156—Extremely large. A leader in quality, size, dependability and yields. Plant now for fruit next spring, summer and fall. 25 plants \$1.65; 50 plants \$2.75; 100 plants \$5.00; 500 plants \$17.50.

### Everbearing Giant Gem

1157—The leading commercial everbearing strawberry. Enormous yields of beautiful hi-quality berries the first season. 25 plants \$1.50; 50 plants \$2.50; 100 plants \$4.50; 500 plants \$16.00.

### EVERBEARING STRAWBERRY GARDEN 115G9

25 Mastadon . . . 1.65	25 plants each labeled, all 75 for only
25 Gem . . . . . 1.50	
25 Superfection . 1.75	

Catalog value \$4.90

**\$3.75**

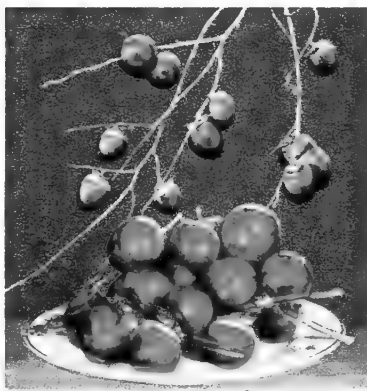
### Everbearing Superfection

1158—Fine new hybrid cross of Gem. Exceeds Gem in yields and quality. Will fruit next spring, summer and fall. 25 plants \$1.75; 50 plants \$2.85; 100 plants \$5.25; 500 plants \$19.00.



### Viburnum Americana

11F11 (High bush cranberry)—Fine, tall growing, ornamental shrub with splendid foliage and big clusters of red berries that remain on plants all winter. Besides their ornamental value the fruit makes fine jellies, jams and bird food. 3 yr. 18 inch size, 75c each; 3 for \$1.95. 3 ft. size, \$1.10 each; 3 for \$2.98.



### American Persimmon

11F12—U. S. Dept. of Agr. bulletin reports persimmon most nutritious fruit grown in U. S. Plant 2 or 3 trees for good fruit production. Fine ornamental trees for yard or farm. Fruit ripens in fall but is not good till freezing weather. 1½ ft. size, 2 for 70c; 6 for \$1.75. 4 ft. size, \$1.25 ea.; 3 for \$2.98.

### Snappy Horseradish

11P10—(Maliner Kren)—Grates up tender, crisp and white as snow, with nippy, sharp taste. Nothing better for flavor. Big crown plants, 25c each; 3 for 60c; 10 for \$1.75. Rooted cuttings, 3 for 42c; 12 for \$1.45.

## Big Apples on Dwarf Trees

Full size fruit on beautiful miniature trees. Will bear fruit 1st or 2nd year. Special imported. Malling dwarfing root stock. Height at maturity 6 to 10 ft. In England, where most all apples are grafted on Malling stocks, they claim the fruit is of much finer flavor. Plant bud union 2 to 4 inches above ground. Choice of three varieties. Early Yellow Transparent 11A13 Late Dbl. Red Delicious, 11A14 Mid-season Red McIntosh, 11A15 Choice of 3 varieties listed, 3 yr., 4 ft. size.

**\$3.50 each;  
5 for \$16.50.**



### Dwarf Apple Tree Special

11A16—One each Yellow Transparent, 1 Dbl. Red Delicious and 1 McIntosh, big, 3 yr., 4 ft. size.

**All 3 for \$9.98.**





## 8 Colorful, Giant Flowering HARDY PHLOX

They will bloom for you next summer and many more years. Dig every three years and divide; cut old flowers to prolong blooms; this also destroys seed. Plant 15 inches apart. Spring Hill's phlox are all new, improved giant-flowering varieties of medium height (florets often large as half dollars). No other hardy plant gives such a showy mass of bright mid-summer blooms. Big, No. 1 plants.

**JULY LIGHTS 12P2—(Cherry-red)** Brilliant colors, fine, big blooms in profusion. Glistens like rubies.

**BORDER QUEEN 12P3—(Watermelon-pink)** Striking, dwarf-growing phlox with massive heads of brightest pink.

**MARY LOUISE 12P4—(Finest white)** Unusually large; prolific grower and bloomer. Very outstanding.

**PHLOX GARDEN SPECIAL**  
Collection No. 12P1—Garden of 8 colorful, giant flowering, hardy phlox listed below. One each color. Big, No. 1 plants (not labeled).  
**8 for \$2.35**

**CHAS. CURTIS 12P5—(Orange-scarlet)** Vigorous and free flowering, striking sunset red. Finest of its color.

**BLUE BOY 12P6—(Nearest blue)** New, best of its color. Vivid blue with lavender sheen.

**PRIME MINISTER 12P7—(White, red eye)** Extra large blooms of snow-white with vivid crimson eye.

**SAN ANTONIO 12P8—(Ruby-red)** Beautiful, rich, ruby-red. Outstanding for size, brilliance, and vigor.

**SALMON GLOW 12P9—(Salmon-orange)** Rich, salmon-orange of harmonizing colors. Strong grower.

Choice of above 8 varieties of phlox, big, No. 1 plants, 36c each; 3 for 95c; 6 for \$1.75.

## VINE AND ORNAMENTAL TREE FALL SALE FEATURES

- HORSERADISH (Maliner Kren)—12H24—Crown plants** 3 for 50c  
Crisp white, nippy, fast and easy growing..... 10 for \$1.45
- WONDER BULB (Colchicum)—12H25** Each 35c  
Blooms without water, soil or care. Cultural directions mailed with bulbs..... 3 for 89c
- CRIMSON FLOWERING CRAB—12T26—(Eleyii)** Each \$2.48  
Our favorite variety; hardy, dependable, beautiful. 3 yr., 5 to 7 ft. size..... 3 for \$6.95
- EUROPEAN MT. ASH (Sorbus)—12T27 Brilliant scarlet berries** Ea. \$2.95  
Abundant blooming and fruiting strain, beautiful. 6 ft. size..... 3 for \$6.95
- FATHER HUGO ROSE (Golden Hugonis)—12R28** Each 90c  
Golden shrub rose. 4 to 5 ft. tall, perfectly hardy. 2 ft. size..... 3 for \$2.48
- GRAPE HYACINTH (Muscari)—12B29** 3 for 25c  
Dainty and charming blue blooms resembling fairy scepters..... 12 for 75c
- LEMON LILY (Hemerocallis)—12L30** 2 for 36c  
Lovely golden day lilies. Spring blooming..... 6 for 90c
- Everblooming HARDY SWEET PEAS—12P31** 2 for 29c  
Lovely and beautiful hardy vine. Red and pink flowers..... 6 for 75c

### SURPRISE PHLOX COLOR COLLECTION

12P510—To keep varieties in balance Spring Hill makes this money saving offer. All big, No. 1 plants that will bloom next summer, 4 for \$1.00. (No broken collections).

- 1 Giant flowering Red.
- 1 Giant flowering White.
- 1 Giant flowering Blue.
- 1 Giant flowering Pink.

**4 for \$1.00**



### Gardenia

12G22—(Veitchi) Fragrant, ever-blooming. The Flower of Romance. A grand inexpensive gift plant. Enjoy growing lovely Gardenias in your garden next summer and the fragrance of these exquisite, waxy, white blooms indoors all winter. A grand garden and house plant. Not winter hardy north of Virginia. Growing instructions and plant food sent with each order. Grow your own for holiday gifts. Good plants, 8 to 10 inches, 59c each; 3 for \$1.55. Blooming size, 12 to 15 inch, \$1.75 each; 3 for \$4.89.

## SPRING HILL NURSERIES CO. TIPP CITY, OHIO

Guaranteed Plants

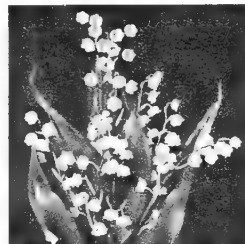
Buy with Confidence

Extra choice varieties with brilliant blooms large as coffee cups (often larger). Choice of **Crimson, 12P11; Pink, 12P12; Orange, 12P14; Scarlet, 12P15.** Large No. 1 plants that will bloom profusely in your garden next spring. 60c each; 2 for \$1.15; 6 for \$3.25.

### Poppy Garden Special

12P516—One each Crimson, Pink, Orange and Scarlet. All large No. 1 plants (unlabeled)  
**4 for \$2.19**

**MIXED POPPIES—12P17—Benary's special** giant Sunbeam mixed imported direct from Germany last year. Highly recommended. 1 yr. plants, 55c each; 2 for 98c; 6 for \$2.69.



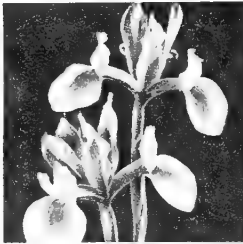
### Lilies of the Valley

12L18—Lovely, fragrant, creamy-white bells on 6 inch stems. Easy to force indoors, and hardy outdoors. Grow best planted in shady locations. For indoor forcing use light soil. Guaranteed to bloom. Big 3 year pips. Blooms indoors. 3 for 55c; 6 for 89c; 12 for \$1.55



### Vesper Iris

12I19—New, long-blooming iris with hundreds of jewel-like flowers. More blooms in July and August than any other iris. Lavender and blue flowers vary in size, shape, and color with markings of copper, gold, brown and red. Hardy plants are beautiful and valuable for summer bouquets. 29c each; 3 for 75c; 6 for \$1.40.



### DUTCH IRIS

12I20—Orchid Flowering Fascinating beauty yet fast growing, inexpensive bulbs that multiply each year. Blooms resemble orchids; rich colors of dark violet, cornflower-blue, yellow and white. Unexcelled for cutting. Plant in well drained soils, protect first winter. 6 for 50c; 12 for 79c; 25 for \$1.35; 100 for \$4.95



### STAR OF BETHLEHEM

12B21—(Ornithogalum umbellatum) Lovely clusters of crisp white, star-shaped flowers on 8 inch stems each spring. Extra winter hardy, tree flowering and easy to grow outdoors in sun or shade or indoors for forcing. Long lasting corsages and bouquets; bulbs multiply. Jumbo size, 3 for 40c; 6 for 60c; 12 for 95c; 25 for \$1.49



### RED EMPEROR

12T23—Largest of all tulips. Brilliant scarlet; petals often 4½ inches long when open, blooming large as dinner plates. A beautiful novelty. 11 to 12 cm. 1st size bulbs. 20c ea.; 3 for 50c; 6 for 89c; 12 for \$1.45; 25 for \$2.89.

## Surprise Chrysanthemum COLOR COLLECTION

13C1—Here at Tipp City we produce over a half million chrysanthemums each year. Hundreds of the best new varieties, acres of plants, millions of blooms. We offer only the better recommended, cut-flower varieties. All are guaranteed hardy, large, double, early and profuse blooming. One each of following colors, 5 for \$1.35. All big, sturdy field grown plants. Shipped with tops broken off.

- Exhibition red.
- Exhibition white.
- Exhibition yellow.
- Exhibition bronze.
- Exhibition pink.

**5 for  
\$1.35**

AMAZING • NEW • FREE BLOOMING • DWARF MOUND SHAPED

## CUSHION MUMS

Our supply of hardy cushion mums is so limited we can only offer them in colors this fall. Spring Hill guarantees only the best, early blooming, free flowering varieties that grow into dwarf, mound-shaped plants without pinching. Choice of the following colors.

Red—13C2 White—13C3 Pink—13C4  
Yellow—13C5 Bronze—13C6

60c each; 3 for \$1.50; 12 for \$4.50

### CUSHION MUM SPECIAL

13C7 One each of 5 colors listed **5 for \$2.25**  
(Unlabeled)



50 or more plants of a size and variety at 100 rate.

### Amur River North PRIVET

13H8—(The hardest privet hedge) Beautiful, upright, fast growing, compact hedge. Ideal for clipped hedge. Plant one foot apart.  
15-18 in. 10 for \$1.40; 25 for \$2.75; 100 for \$ 9.75  
18-24 in. 10 for \$2.20; 25 for \$4.50; 100 for \$16.00  
2-3 ft. 10 for \$2.95; 25 for \$6.25; 100 for \$22.50

### BUSH HONEYSUCKLE

13H9—(Lonicera Tartarica Rosea)—Extra hardy, rapid growing, tall, spreading plants up to 10 feet. Grows well in sun or shade. Filled with rose-red flowers in early summer followed by red berries that make excellent food for birds. Hardy in North  
12-18 in. 10 for \$1.75; 25 for \$3.65; 100 for \$12.50.  
18-24 in. 10 for \$2.25; 25 for \$5.00; 100 for \$18.00.  
3-4 ft. 10 for \$5.95; 25 for \$13.75; 100 for \$53.00.

### New Ibolium PRIVET

13H10—(Ibolium) Very hardy, hybrid of California and Amur River. Has lustrous foliage and is extremely hardy. Plant one foot apart.  
15-18 in., 10 for \$1.40; 25 for \$2.75; 100 for \$9.75.  
18-24 in., 10 for \$2.20; 25 for \$4.50; 100 for \$16.  
2-3 ft., 10 for \$2.95; 25 for \$6.25; 100 for \$22.50.

### SPIREA Van Houttei



### Amur River North PRIVET



### MIDGET HEDGE



### MIDGET HEDGE

13H11—(Teucrium Chamaedry's)—Splendid low growing, hardy plants resembling dwarf Boxwood in foliage and growth. Recommended for use where boxwood is not hardy and a low, formal border or edging for flower or rose beds is desired. Clip to any desired height up to 12 inches.

Pot size, 10 for \$2.98; 25 for \$6.85; 100 for \$25.00.  
Field grown, 10 - \$3.75; 25 - \$8.75; 100 - \$32.50.

### Red Leaved BARBERRY

13H12—(Atropurpurea) Bright red foliage all summer. Plant in full sunlight for reddest color. Plant 1 ft. apart for hedge; 2 ft. for borders.

9-12 in. 10 for \$1.95; 25 for \$4.25; 100 for \$16.00  
12-18 in. 10 for \$2.60; 25 for \$5.75; 100 for \$22.00  
2-3 ft., 10 for \$4.75; 25 for \$10.95; 100 for \$40.00.

### SPIREA Van Houttei

13H14—(Bridal Wreath) World's most universal flowering shrub. Plants are a mass of white in bloom. Easy to grow, does well in sun or shade.

9-12 in. 10 for \$1.10; 25 for \$2.00; 100 for \$ 6.75  
12-18 in. 10 for \$1.60; 25 for \$3.25; 100 for \$11.50  
2-3 ft., 10 for \$4.25; 25 for \$9.50; 100 for \$35.00.



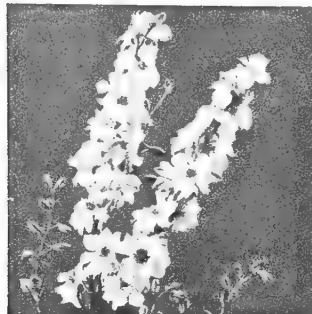


# SALE

## SPRINGHILL'S SENSATIONAL EXTRA VALUE PAGE



### 1¢ Buys an Extra Article



**Everblooming Dwarf DELPHINIUM**  
 14P1 (Blue Butterfly)  
 Finest florist cut-flower strain. Lovely clear sky blue blooms continuously. Hardy, healthy, easy to grow plants, 2 yr. size, 33c each;  
**SALE PRICE 2 for 34c**



**BLUE SPRUCE**  
 1452 — (*Picea pungens Glauca*) — Good blue spruce are expensive and add to the value of property. 4 years old, 6 to 8 inch size, 97c each;  
**SALE PRICE 2 for 98c**



**Prince of Wales VIOLET**  
 14P3 — Fragrant, hardy, large flowering. Deep purple blooms in spring and fall. Twice blooming. Easy to grow, 40c each;  
**SALE PRICE 2 for 41c**



**SHASTA DAISY Conqueror**  
 14E4 — Immense white flowers, yellow centers, in great profusion. Excellent, long lasting bouquets. 2 yr., 30c each;  
**SALE PRICE 2 for 31c**



**HARDY CACTUS**  
 14P5 — (*Opuntia Rafinesquii*) Hardy at 20° below zero, can be grown indoors or outdoors. Beautiful and interesting red and yellow flowering plant for gardens, 60c ea.  
**SALE PRICE 2 for 61c**

### 1 CENT SALE . . . SENSATIONALLY LOW PRICES

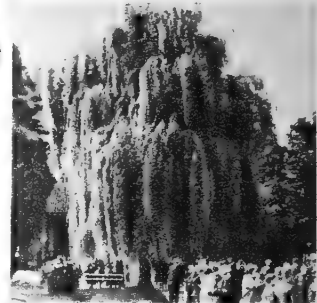
## Economy SHADE TREES BEST VARIETIES

Outclassing all competition in small, straight, healthy trees.

<b>WEeping WILLOW</b> (Select weeping strain)	14T8	2 for 56c
3 to 4 ft. size, 55c each	SALE PRICE	
<b>SILVER MAPLE</b> (Fast growing trees)	14T9	2 for \$1.76c
5 to 7 ft. size, \$1.75 each	SALE PRICE	
<b>CHINESE ELM</b> (Rapid growing strain)	14T10	2 for 46c
3 to 4 ft. size, 45c each	SALE PRICE	
<b>CHINESE CHESTNUT</b> (Blight resistant)	14T11	2 for 99c
1 ft. size, 98c each	SALE PRICE	
<b>SILVER MAPLE</b> (Fast growing maple)	14T12	2 for 51c
3 ft. size, 50c each	SALE PRICE	
<b>WHITE BIRCH</b> (European whitest bark)	14T14	2 for \$1.26
4 to 5 ft. size, \$1.25 each	SALE PRICE	
<b>NORWAY MAPLE</b> (Fine avenue tree)	14T15	2 for \$2.51
4 to 5 ft. size, \$2.50 each	SALE PRICE	
<b>RED BUD</b> ( <i>Cercis Canadensis</i> )	14T16	2 for 76c
4 yr., 2 to 3 ft. size, 75c each	SALE PRICE	



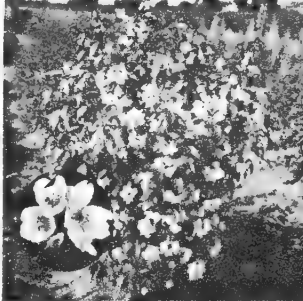
**Lombardy Poplar**  
 14T6 — Stately, tall, narrow trees of rapid growth with glossy leaves that shimmer in the sunlight. Excellent along drive-ways, as tall screens or hedges. 2 yr., 4 to 5 ft., 50c  
**SALE PRICE 2 for 51c**



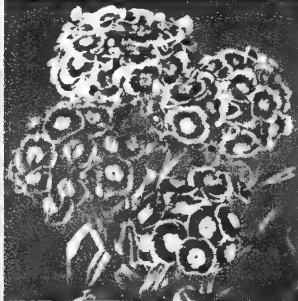
**Weeping Willow**  
 14T7 — (*Salix Pendula*) One of the fastest growing ornamental shade trees with long graceful, arching branches. Beautiful, compact specimen plants in 3 or 4 years from Spring Hill's select strain; 5 to 6 ft. size, \$1.50 each;  
**SALE PRICE 2 for \$1.51**



**Chameleon or Polka Dot Tulips**  
 14P17 — (*Ossi Osioaldi*) Rare and beautiful. Opening white with petals edged cherry-rose. This color spreads through the large blooms dotting them clear rose. Top size, 25c each.  
**SALE PRICE 2 for 26c**



**Fragrant MOCK ORANGE**  
 14P18 — (*Philadelphus Cornarius*) Lovely pearly-white blooms of intense and delightful fragrance for weeks each spring. Grows 10 ft. tall. Big, 2-ft. plants, 45c ea.;  
**SALE PRICE 2 for 46c**



**New Hybrid Giant SWEET WILLIAMS**  
 14B19 — Select strain imported direct from Holland. Giant blooms, rainbow colors, for weeks during May and June. 2nd year offered, amazing beauty. 38c each;  
**SALE PRICE 2 for 39c**



**Hardy Sweet Peas**  
 14P20 — Large, fragrant flowers in profusion throughout summer. Hardy, fast climbing vines that grow for years without replanting. Assorted colors only. Big plants, 36c each.  
**SALE PRICE 2 for 37c**



**Giant Mallow Marvel HARDY HIBISCUS**  
 14P21 — Largest blooming perennial, pastel colors of pink, red and white (no choice of colors). Blooms throughout the summer months. 2 yr. plants; 29c each;  
**SALE PRICE 2 for 30c**



## French Hybrid LILACS

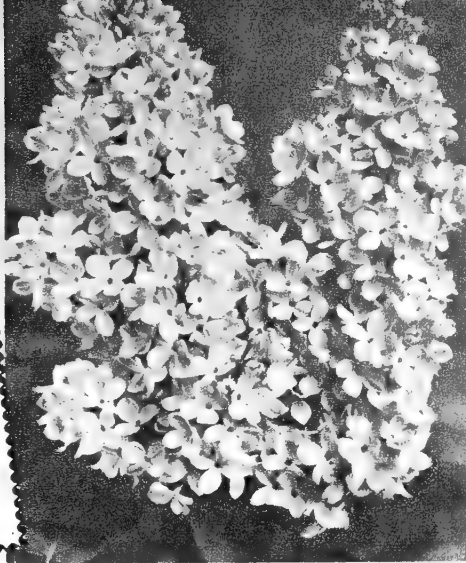
- BELLE DE NANCY**  
1554—Huge, satiny rose-pink.
- PRES. GREVY**  
1555—Giant, vivid blue.
- MADAM ABEL CHATNEY**  
1556—Fine, big, white.
- LUDWIG SPAETH**  
1557—Intense dark red.

Choice of above 4 French hybrid lilacs. 2 yr., 24 inch 90c each; 3 for \$2.50. 3 yr., 36 inch, \$1.35 each; 3 for \$3.85.

### French Hybrid LILAC GARDEN SPECIAL

155G3—One each 4 varieties listed, separately labeled in 3 yr. 36 inch size. Regular \$5.40 catalog value.

All 4 for \$4.75



## Beautiful Lilacs

### Old Fashion Lilac

1551 — (*Syringa vulgaris*) — Famous for its fragrance and profusion of lovely lavender blooms in the spring. 2 yr. 18 inch, 50c each; 3 for \$1.35. 3 yr., 3 ft., 75c each; 3 for \$1.98.

### Persian Lilac

1552 — (*Rothomagensis*) Vivid lilac-rose blooms fill the dwarf growing plants. Beautiful, highly recommended. 2 yr., 18 inch size, 40c each; 3 for \$1.10, 3 yr., 3 ft. size, 70c each; 3 for \$1.85.

## Finest Hardy SHRUBS

### GIANT P. G. HYDRANGEA

1558 — Massive snowy-white flowers in late August change to beautiful rose-pink color and remain pretty for weeks. Very winter hardy, sturdy and vigorous growing, hardy shrub. 1 ft. size, 40c each; 3 for \$1.10. Heavy, 2 ft. size, 75c each; 3 for \$2.00.

### RED BUSH HONEYSUCKLE

1559 — (*Lonicera Zabeli*) A tall, hardy shrub that grows well in sun or shade. Glossy foliage on compact, semi-dwarf, upright plants. The reddest of all shrub honeysuckles. Extra large, bright carmine-red flowers. Recommended. 1½ ft. size, 37c each; 3 for \$1.00; 10 for \$2.98. 4 ft. size, 80c each; 3 for \$2.20.

### EVERBLOOMING DOUBLE MOCK ORANGE

15510 — (*Philadelphus Virginal*) Big, double, thick, waxy white blooms from early spring till fall. Neat semi-dwarf shrubs growing 6 ft. tall. Very popular and one of the best, easy-to-grow hardy shrubs. 1 ft. size, 55c ea; 2 for 98c. 2 to 3 ft. 90c ea; 3 for 2.50.

### SMOKE TREE

15511 — (*Rhus cotinus*) An enhancing tree-like shrub; enveloped in mid-summer with showy masses of purplish, misty flowers resembling beautiful clouds of drifting smoke. Attractive, brilliant scarlet and golden autumn foliage. 3 yr. 4 ft. size, 90c each; 3 for \$2.50.

### EVERBLOOMING DWARF PINK SPIREA A. W.

15512 — The compact, low growing plants with rose-red flowers blooms continuously. Extra choice shrub for borders, edging. 2 yr. bushy, 12 to 15 inch, 40c each; 2 for 75c; 6 for \$1.98; 3 yr. 1½ to 2 ft., 85c each; 3 for \$2.35.

**FAMOUS SPIREA V. H. (Bridal Wreath)** see hedging page 13.

**RED BARBERRY** see hedging page 13.

### BEAUTY BUSH

15514 — (*Kolkwitzia Amabilis*) Graceful, tall shrubs filled with clusters of tube-like flowers. Deep pink outside with creamy throat. Thousands of blooms each spring. One of the most beautiful, hardy shrubs from the Orient, with arching branches. 1 to 1½ ft. size, 45c each; 3 for \$1.19; 6 for \$1.75. 3 yr. 2 to 3 ft. size, 75c each; 3 for \$2.00.

### OLD FASHIONED SNOWBALL

15515 — (*Viburnum opulus sterilis*) A tall growing shrub with large, round, snowball-like blooms of clear crispy white that blooms in late May. Makes excellent Decoration Day bouquets. In autumn the foliage changes to red and gold. 1½ ft. size, 2 yr. 60c each; 3 for \$1.65. 3 ft. size, 95c each; 3 for \$2.55.

### GIANT PUSSY WILLOW

15516 — (*Caprice*) True, giant flowering French strain. Big, silvery-pink catkins 1 to 2 inches long. Cut branches in January or February for indoor bouquets. 2 yr. 1½ ft. size, 40c each; 2 for 75c; 12 for \$3.00. Big, 3 ft. size, 80c each; 3 for \$2.25.

### PINK FLOWERING ALMOND

15517 — Very popular dwarf shrub filled with hundreds of large, double, bright pink flowers each spring. Hardy and easy to grow. Heavy, 1 to 1½ ft. size, 48c each; 3 for \$1.25. 2 to 3 ft., 75c each; 3 for \$1.98.

### FORSYTHIA (Golden Bell) 15518 — (*Spectabilis*)

Giant flowering golden bell. A greatly improved variety for abundance of blooms with deep richer golden color. 2 yr., 2 foot size, 45c each; 3 for \$1.19. 3 yr., 3 foot size, 70c each; 3 for \$1.85.

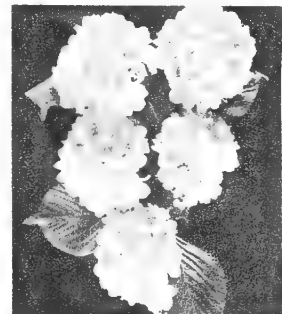
Sorry, no room to list all the hardy shrubs and trees we grow. If you drive to the nursery or write we will have many more varieties available at low prices.



SMOKE TREE



DOUBLE MOCK ORANGE



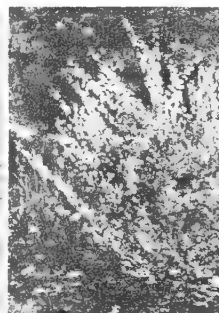
OLD FASHIONED SNOWBALL



BEAUTY BUSH



DWARF PINK SPIREA



FLOWERING ALMOND

### SWEET SHRUB

### SWEET SHRUB

15519 — (*Calycanthus*) An unique shrub with large, glossy leaves from the axils of which spring odd spicily-fragrant, chocolate-red flowers. 1 to 1½ ft. size, 40c each; 2 for 75c. Heavy, 2½ ft. size, 75c each; 2 for \$1.35.

**EVERBLOOMING RED WEIGELA 15520 — (*Eva Rathke*)** Beautiful cardinal-red blooms with silver sheen. 12 inch pot plants, 48c each; 3 for \$1.25. Big, 3 yr. 3 to 4 ft. size, 80c each; 3 for \$2.15.

### EVERBLOOMING ROSE WEIGELA

15521 — (*Abel Carreri*) By far the best deep pink variety. Deep rosy-pink blooms in profusion. 1 to 1½ ft., 37c each; 3 for 95c. 3 yr., 3 ft. size, 70c each; 3 for \$1.85.

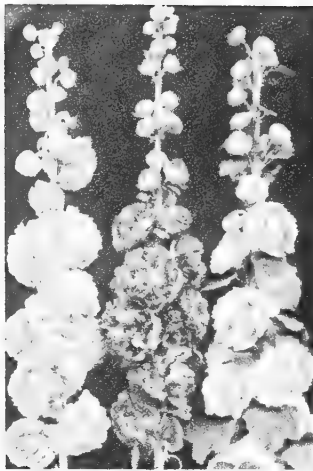
### RED WEIGELA



**SPRING HILL NURSERIES**  
TIPP CITY, OHIO

# Beautiful Hardy Flowers

Grow Each Year  
Without Replanting



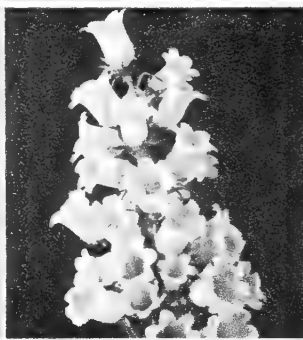
### DOUBLE HOLLYHOCKS

**16P1**—Tall, strong stalks filled with big 3 to 4 inch double and semi-double blooms that resemble peonies. Easily grown, hardy plants, colorful for 4 to 8 weeks. Delightful mixed colors only. Big plants. 2 for 38c; 4 for 65c; 10 for \$1.45.



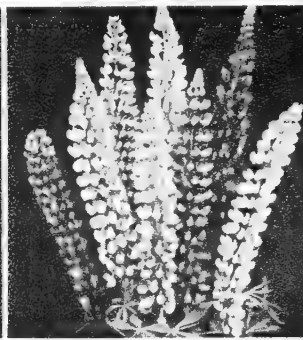
### KAEMPFERI IRIS

**16P2**—Famous Oriental or Japanese Iris. Spring Hill's art shades are mostly giant, double flowering. Blooms often large as dinner plates. Assorted colors. Graceful, foliage is attractive when blooms are past. Big 2 yr. 40c ea. 3 for 99c; 12 for \$3.75.



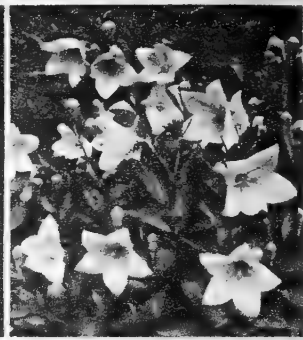
### CANTERBURY BELLS

**16P3**—(Campanula Medium) Bell-shaped flowers on 2½ ft. stems that are covered with blooms in May and June. Splendid mixture of white, pink and blue. Of easy culture but protect in winter. 25c each; 3 for 60c; 6 for \$1.05.



### LUPINES

**16P4**—(Giant Russell) Amazing in their size and beauty of color. Spikes 3 to 5 ft. tall with blue, pink, red, yellow, maroon, purple and bi-color flowers. 2 yr. plants will produce an abundance of flowers next summer. 33c ea; 3 for 85c; 6 for \$1.55.



### CHINESE BALLOON FLOWER

**Platycodon**—**16P5**—Big balloon-shaped buds that open into perfect stars of wax-like flowers during August and September, fine for bouquets. **Shell Pink**—35c each; 3 for 90c; 6 for \$1.65. **Double Blue**—45c each; 3 for \$1.20.

## SPRING HILL'S HARDY Vines

**SILVER LACE VINE**—**16V6**—Grows fast, will bloom 1st year. 2 yr. No. 1 size, 75c each; 3 for \$1.98.

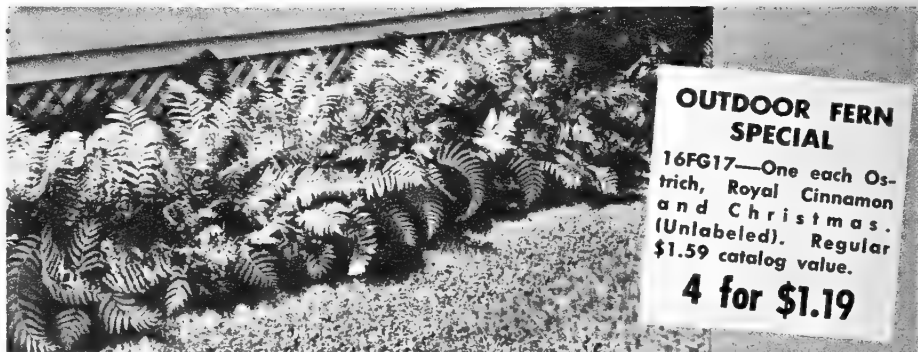
**BITTERSWEET**—**16V7**—Famous for winter decorations. 2 yr. size, 49c each; 3 for \$1.25. 3 yr. fruiting age, 75c each; 3 for \$1.98.

**BOSTON IVY**—**18V8**—Fast growing, clings to walls; red leaves in the fall. 1 yr., 55c each; 3 for \$1.39. 2 yr., No. 1, 89c each; 3 for \$2.20.

**EVERGREEN BITTERSWEET**—**16V9**—Stays green all winter, clings to walls. Pot size, 45c each; 3 for \$1.15.

**WISTERIA PURPLE**—**16V10**—Extra large, long blooms in profusion. Grafted plants guaranteed to bloom. 3 yr., \$1.10 each; 3 for \$2.95.

**FRAGRANT HONEYSUCKLE**—**16V11**—Fast growing, hardy vine, creamy-white blooms. 2 yr., 39c each; 3 for \$1.00. 3 yr., 49c each; 3 for \$1.25.



### OUTDOOR FERN SPECIAL

**16FG17**—One each Ostrich, Royal Cinnamon and Christmas. (Unlabeled). Regular \$1.59 catalog value.

**4 for \$1.19**

## Decorative Hardy OUTDOOR FERNS

For cool, shady locations where it is hard to grow grass or flowers. The graceful, hardy ferns will change bare areas into beauty spots. Set 10 to 12 inches apart in spring or fall. Perfectly hardy; divide plants when they grow thick.

### OSTRICH FERN

**16F12**—(Pteritis Nodulosa) Tall, graceful. Hardy species. Big clumps, 36c each; 3 for 95c; 6 for \$1.69; 12 for \$3.10.

### CINNAMON FERN

**16F15**—(Osmunda Cinnamomea) Upright growing with stately sword-like fronds. Big clumps, 38c each; 3 for \$1.00; 6 for \$1.80; 12 for \$3.35.

### ROYAL FERN

**16F14**—(Osmunda Regalis) Medium height, dark glossy foliage. Big clumps. 40c ea.; 3 for 1.10; 6 for 1.95; 12 for 3.70.

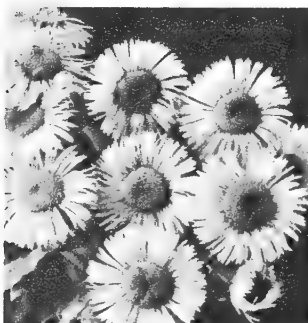
### CHRISTMAS FERN

**16F16**—(Polystichum Acrostichoides) Exquisite, hardy evergreen species of medium size. 45c each; 3 for \$1.20; 6 for \$2.15; 12 for \$3.98.

## SPRING HILL NURSERIES

TIPP CITY, OHIO

102nd Anniversary Year



### BLUE FRINGED DAISY

**16P18**—(Erigeron) Beautiful clusters of azure blue flowers for several months each summer. Excellent for cutting. Hardy, easy to grow. Can divide plants. 35c each; 3 for 90c; 6 for \$1.65.



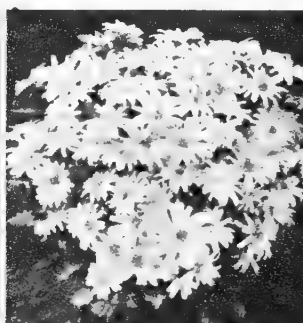
### PAINTED DAISY

**16P19**—(Pyrethrum) Robinson's giants, improved large flowering European strain. Shades of brightest pinks and reds. Dwarf plants, attractive cut-leaf foliage. 2 yr., 29c each; 3 for 75c; 6 for \$1.35.



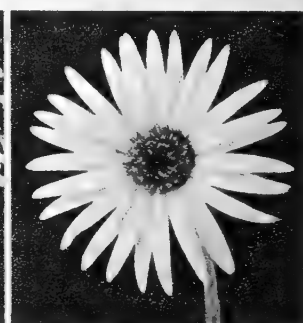
### DIENER'S DOUBLE DAISY

**16P20**—(Shasta Daisy) Nearly double, like China aster, with fringed, fluffy petals. Excellent for bouquets. Best of all double Shastas. Hardy, vigorous, and free flowering. 33c ea.; 3 for 79c; 6 for \$1.50.



### PINK SHASTA DAISY

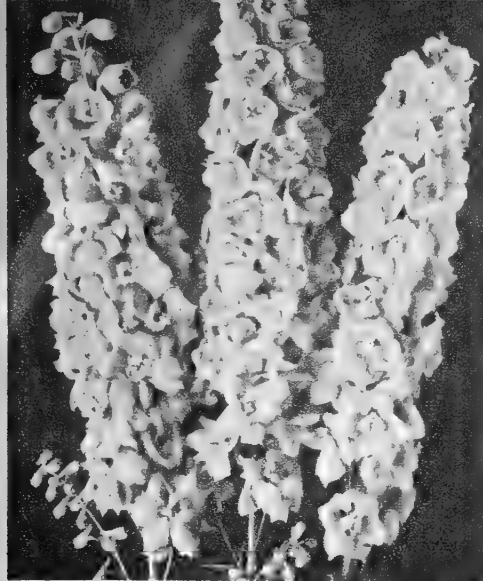
**16P21**—(Clara Curtis) Lovely, clear, salmon-pink flowers from early August through September in great profusion. Hardy, easy to grow. Free flowering. 38c each; 3 for \$1.00.



### MAY QUEEN

**16P22**—(Shasta Daisy) Earliest blooming, large, cut-flower variety. New, imported strain from Holland with hundreds of white blooms in May and June. For Decoration Day. 27c each; 3 for 65c; 6 for \$1.15.





## DELPHINIUMS

### Superb Pacific Hybrids

**17D12**—Magnificent spikes on tall, strong stems 3 to 6 ft. tall. Filled with individual flowers often as large as silver dollars. Harmonious colors of deepest violet through lavender, pink, light blue and mauve. Without question, the world's finest strain for size, beauty, freedom of bloom, hardiness and healthiness. Assorted colors only. **40c each; 3 for \$1.00; 12 for \$3.60.**

### Delphinium Belladonna

**17D14**—The plants are not as tall as the popular hybrids but they produce many more bloom spikes especially nice for cutting. The strong, wiry stems are 3 to 4 ft. tall and the blooms are produced through spring and again in the fall. Very hardy and of easy culture. **29c each; 3 for 75c; 12 for \$2.65.**

### Delphinium Bellamosa

**17D15**—Identical in every way to Belladonna except the blooms are a deep, rich blue. **29c each; 3 for 75c; 12 for \$2.65.**

### BELLADONNA AND BELLAMOSA DELPHINIUM GARDEN

**17D16**—Two each of Belladonna and Bellamosa delphiniums (not labeled)

**4 for 89c.**

## CUT-FLOWER HARDY ASTERS

Easily grown, free blooming. Plants provide color through late summer and early fall, compact 3 to 4 ft. plants. Plants can be divided and grow for many years without replanting.

**BEECHWOOD CHALLENGER—17P6**—Red.

**BLUE GEM—17P7**—Deep, rich violet.

**PALMYRA—17P8**—Bright pink.

**MT. EVEREST—17P9**—Lovely white.

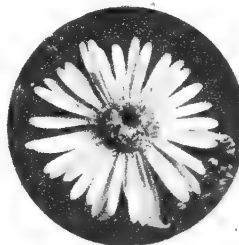
**PLENTY—17P10**—Sky blue, large.

Choice of above 5 cut-flower, hardy asters, big field grown plants, **50c each; 3 for \$1.35; 10 for \$3.95.**

### CUT FLOWER ASTER GARDEN SPECIAL

**17PG11**—One each of above 5 cut-flower asters, each labeled.

**5 for \$1.95**



### Dwarf Aster Garden Special

**17PG5**—One each of

4 dwarf asters all labeled. **4 for \$1.60**



### Dwarf Hardy ASTERS

Perfectly hardy, grow from year to year, no replanting. The following varieties resemble the famous Cushion chrysanthemums in size and shape. In August and September plants are so heavily filled with blooms they hide the foliage. Wonderful for borders as the plants do not grow over 1 ft. tall.

**LILAC TIME—17P1**—Beautiful lilac.

**NIOBE—17P2**—Snow-white, gold center.

**COUNTESS OF DUDLEY—17P3**—Lilac-pink.

**LITTLE RED BOY—17P4**—Rose-red.

Choice of above 4 dwarf, hardy, field grown plants, **50c each; 3 for \$1.35; 10 for \$3.95.**

## BABY'S BREATH (Gypsophila)

**WHITE BABY'S BREATH—17P22**—(Paniculata)—Tall plants covered with single, misty-white blooms. Excellent for cutting. **2 yr., 27c each; 3 for 65c.**

**NEW PINK BABY'S BREATH—17P25**—(Oldhamiana)—Hardy and free blooming. Tiny blossoms of flesh pink are borne in profusion and carried close in airy terminal panicles. Blooms from August till frost. Best misty mixer for bouquets. Strong, 2 yr. plants, **35c each; 3 for 90c; 6 for \$1.62.**

**ROSY VEIL—17P24**—(Double, pink, grafted)—Excellent dwarf, compact 2 ft. plants are filled with small, double, pink flowers. Earliest to bloom and often blooms again in fall. **55c each; 3 for \$1.45.**

**BRISTOL FAIRY—17P23**—(Grafted, double baby's breath)—A wonderful introduction. Produces misty-spires of large pure white flowers. Flowers throughout summer. Strong, grafted plants, **69c each; 3 for \$1.90.**



### Baby's Breath Garden

17P26

- 1 White Baby's Breath . . . . \$ .27
- 1 Bristol Fairy, double white . . . . .69
- 1 Rosy Veil, double pink . . . . .55
- 1 New Pink Baby's Breath . . . . .35

Certified catalog value . . . \$1.86

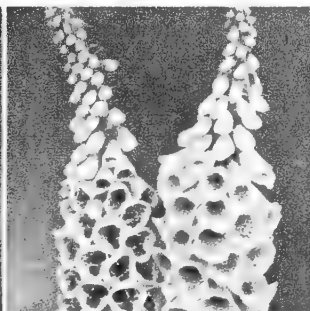
**All 4 unlabeled \$1.49**

## SPRING HILL NURSERIES CO. • TIPP CITY, OHIO



### COREOPSIS DOUBLE SUNBURST

**17P17**—Finest and most showy of all coreopsis. Rich golden-yellow double blooms in great abundance for cutting and garden display throughout summer. Easy to grow and hardy. **27c each; 3 for 65c; 6 for \$1.15.**



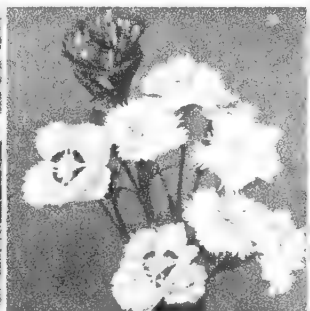
### FOXGLOVE

**17P18**—(Digitalis) Strong stems 3 ft. long filled with bell-shaped flowers of white, shell pink and deep rose. Creamy-golden throats dotted crimson and chocolate. Finest hybrids bloom throughout the summer. **29c each; 3 for 75c; 6 for \$1.35.**



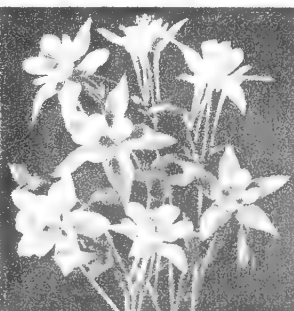
### BASKETS OF GOLD

**17P19**—(Alyssum saxatile compactum) Hardy, dwarf perennials with silvery foliage that is completely covered with bright yellow blooms in early spring. Fine for rock garden and borders. **27c each; 3 for 65c; 6 for \$1.15.**



### DOUBLE FRAGRANT PINKS

**17P20**—Highland Hybrids (Dianthus plumaris) Lovely fragrant blooms in great abundance of bright pink and crimson. Hardy, compact, silvery-foliaged plants bloom in late May. **29c each; 3 for 75c; 6 for \$1.35.**



### COLUMBINE AQUILEGIA

**17P21**—(Imperial Hybrids) Beautiful, large, long spurs of white, blue, pink, violet, yellow, etc., in all combinations. Large, tall, free flowering plants bloom from early to late spring. Easy to grow. **2 yr., 28c each; 3 for 69c; 6 for \$1.25.**





(See opposite page  
for description  
and prices)

**PARROT TULIP Fantasy 10 for 89c**

18T3—Big, 1st size, 11 to 12 cm. bulbs.



**Mixed Giant Flowering CROCUS**

18B2—Big, imported 7 to 8 cm. bulbs... **25 for 75c**  
(Description and prices see opposite page)



**Beautiful  
Black Magic  
IRIS**

18L5—(Description  
and prices see  
opposite page)

**3 for \$1.45**



**King Alfred DAFFODIL**

18D1—Imported double nose giant No. 1 bulbs.  
REMARKABLY LOW PRICES • FINEST QUALITY BULBS

(Description and prices see opposite page) **5 for \$1.00 • 100 for \$15.00**



**Magic LILY**

18L4—Large blooming size bulbs.

(See opposite page for description and prices)

**3 for \$2.75**

# DAFFODILS (Narcissi)

Bulbs increase rapidly  
Easy to grow

**Narcissus-Daffodil**... "What is the difference?" None, whatever, one is the Latin name, the other the English name for the same plant. *E. A. Bowles in—MY GARDEN IN SPRING.*

## SPRING GLORY

**19D2**—Always free blooming. Rich, pure yellow trumpet with pale primrose petals. A great favorite for the garden or forcing. *Dbl. nose giants*, 2 for 55c; 5 for \$1.10; 12 for \$2.25; 100 for \$16.50. *Dbl. Nose*, No. 2, 6 for 95c; 12 for \$1.79; 25 for \$3.20.

## DOUBLE DAFFODIL TWINK

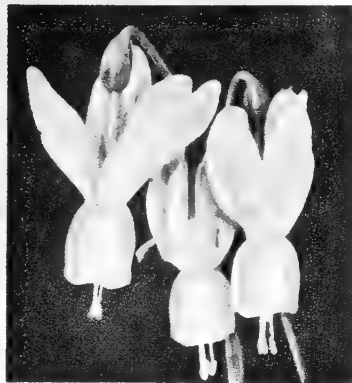
**19D3**—A very free flowering, hardy variety, easy to grow. Beautiful soft primrose and clear orange petals alternate and are so arranged to give the flowers a most attractive appearance. A beautiful and useful novelty. *Giant Dbl. Nose*. Lowest prices; 2 for 50c; 5 for \$1.00; 12 for \$2.15; 100 for \$15.00.

## KING ALFRED (See color picture opposite page)

**19D1**—Extra large with rich, lustrous golden-yellow color of great substance and refined finish. Trumpets 2 inches long, petals often 4 inches across. *King* of all daffodils for forcing or outdoor planting.

• Low prices, *dbl. nose giants*, 2 for 50c; 5 for \$1.00; 12 for \$2.15; 100 for \$15.00.

• *Dbl. nose*, No. 2, 6 for 89c; 12 for \$1.65; 25 for \$2.98; 100 for \$11.00.



**ORCHID NARCISSUS  
THALIA—19D4**

—Exquisite, pearly-white flowers 3 to 4 to a stem two inches or more across make a beautiful cluster. Named because of its great resemblance to an orchid. Very good forcer and garden variety. 35c each; 3 for 79c; 12 for \$2.65; 25 for \$4.95.



## Giant Trumpet DAFFODIL MIXTURE

**19D5**—A guaranteed, hand made mixture of finest, large trumpet varieties. Do not confuse with ordinary mixture. All suitable varieties for forcing or indoor planting. *Big savings! Big No. 2 double nose bulbs.*

3 for 35c • 6 for 65c

12 for \$1.10

25 - \$2.00 • 100 - \$7.75

## Giant Flowering CROCUS

(See color picture opposite page)

"SPRING'S 1ST COLOR"

**19B6**—(Imported Holland Bulbs)—One of the first flowers in spring; often blooms when late snows are on. Offered in separate colors and mixed. Plant them liberally in any nook, under shrubbery, in the lawn, also excellent for borders. Plant 3 to 4 inches apart, 2 to 3 inches deep. They multiply and last for years. Spring Hill's big imported bulbs produce more and large blooms. Easy to bloom indoors; just pot bulbs and set in window. *Giant blooming size 8 to 9 c.m. bulbs*, choice of Blue, White, Purple, Yellow and Striped,

6 for 39c • 12 for 60c  
25 - \$1.10 • 100 - \$3.95



## MIXED GIANT CROCUS

19B7—Giant blooming, 7 to 8 c.m. bulbs,

6 for 25c; 12 for 42c;  
25 - 75c; 100 - \$2.50.

## Magic Lily

(See color picture opposite page)

**19L12**—(*Lycoris Squamigera*)—The only perfectly hardy amaryllis grown. Surprisingly beautiful with clusters of 5 to 12 large opalescent pink blooms on a stem. The attractive foliage dies in July a few weeks later as if by magic the flower stems seem to pop out of the ground and grow rapidly to a height of 2 ft. Easily grown in sun or partial shade. Bulbs multiply each year. *Big, large blooming size bulbs at reduced prices.*

\$1.00 ea. • 3 for \$2.75  
• 10 for \$8.75

## Black Magic Iris

(See color picture opposite page)

**19I13**—The lustrous fall and spring flowering iris. Black Magic is called the finest spring and fall blooming iris. The strong, healthy plants bloom each spring, again through August and September often producing more flowers in the fall than ordinary varieties produce in the spring. Exquisite rich, velvety-purple; color nearly black with satiny sheen. *Strong blooming size plants.*



## Parrot or Dragon TULIPS

Attractive fringed petals beautifully colored. Interesting, unusual, wonderful for cutting. You will enjoy their quaintly shaped flowers of artistic form. (Special low prices).

### Blue Parrot

**19T9**—Glorious bright violet shading to steel blue. Highly recommended. 5 for 55c; 10 for 89c; 25 for \$1.75.

### Red Champion

**19T10**—Huge flowers of bright crimson carried on strong stems. Very scarce, recommended. 3 for 60c; 6 for \$1.10; 12 for \$1.85; 25 for \$3.50.

### Sunshine

**19T11**—Large, golden-yellow; tall, best of yellow parrot tulips. Strong growing, free flowering. 3 for 60c; 6 for \$1.10; 12 for \$1.85; 25 for \$3.50.

### FANTASY

(See color picture opposite page)

**19T8**—The most exquisite novelty tulip in existence. It is a lovely delicate pink color shading to deep rose at the base and on the interior. Brilliant splashes of emerald-green on the pink feathery fringed petals give it all the vividness of the tropics.

5 for 55c • 10 for 89c  
25 for \$1.75

# PATENTED EVERBLOOMING

# Hybrid Tea Roses

Patented roses are new varieties with outstanding merit that have been granted patent rights. This gives the originator production and royalty protection and encourages him to continue his research. The eight patented roses listed are all everblooming hybrid tea roses that will bloom profusely and continuously in your garden next spring, summer and fall.



**TO GROW THE BEST, PLANT THE BEST**  
AAR'S (Means All American Rose Selections)—trials are made for two years in nineteen test gardens in all climates and soils in America. Impartial judges from a non-profit national organization of America's leading rose judges and amateurs score each variety on a uniform point system. Only top-scoring roses good in every way are selected.



### Nocturne

**20R1**—(AAR'S Winner 1948)—This year voted one of the top 10 All American roses. Beautiful, long, streamlined buds and fine open richly textured flowers of intriguing dark cardinal-red. The plants are vigorous, healthy with lustrous green foliage. Remarkably free blooming pleasantly fragrant. *Plant Patent No. 713. \$1.75 each; 3 for \$4.65.*

### Peace

**20R2**—AAR'S winner 1946. Voted one of top 10 roses for 1950. Unbelievable in its beauty; lasting qualities and massive sizes. Delicate yellow, gold and cream colors blend superbly to ruffled petal edge of soft pink. Each flower changes from day to day retaining its fresh, crisp appearance. Peace is also remarkable as a healthy, vigorous growing plant that produces an endless succession of blooms all season. Highly recommended. (*Plant Patent No. 59*) **\$2.50 ea.; 3 for \$6.60.**

### Taffeta

**20R3**—(AAR'S Winner 1948)—Many long-stemmed, slender buds of rich carmine, upon opening show a rare combination of begonia-rose, salmon, and gold tints delicately blended yet clear and sparkling. Vigorous upright plants with thick, leathery, healthy foliage. A perfect rose for the bud vase of intriguing color harmony. Voted one of top 10 roses for 1950. *Plant Pat. No. 716. \$1.75 each; 3 for \$4.65.*

### Charlotte Armstrong

**20R4**—(AAR'S first prize winner)—Judged one of top 10 roses for 1950. Deep red, streamlined buds of perfect form. Magnificent blooms of spectrum red and cerise retain their brilliant color and exquisite form for many days. Thrifty growing, hardy plants have long stems excellent for cutting. One of the finest roses. *Plant Pat. No. 455. \$2.00 each; 3 for \$5.25.*

### Forty Niner

**20R5**—The most brilliant of all bi-colors. Voted one of top 10 roses for 1950. Outside of petals is a rich, chrome-yellow. The inside face of petals is vivid, orient-red changing to cherry-red. Long, pointed buds are brilliantly colored, pleasantly fragrant and open into well shaped double blooms. *Plant Patent No. 792. \$2.00 each; 3 for \$5.25.*

### Mirandy

**20R6**—(AAR'S Winner 1945)—1st award winner in 1945. Now selected the top 10 AAR'S winner for 1950. A strong free-branching plant producing large, long, pointed buds of rich dark red with black shadings. The immense heart-shaped blooms are fully double, beautifully formed, marvelously fragrant. *Plant Patent No. 632. \$1.75 each; 3 for \$4.65.*

### Lowell Thomas

**20R7**—(*Plant Patent No. 596*) Vibrant clear yellow blooms open from beautifully shaped buds. The big blooms fully 4 inches across have high cupped centers with outward cupped petals. The penetrating color is clear and deep with an elusive delicate fragrance. The plants are vigorous with handsome deep green foliage and produce single blooms on long, stiff stems. Recommended in every way. **\$2.00 each; 3 for \$5.25.**

### Crimson Glory

**20R8**—(*Winner of many prizes*)—Its splendid performance and continued popularity are evidence of why it is rated one of the top ten roses in America and Europe. Magnificent, well-formed blooms of intense, deep, vivid crimson with maroon shadings and fascinating fragrance. Vigorous, low, spreading, healthy plants. (*Plant Patent No. 105*). **\$1.75 each; 3 for \$4.65.**

## PATENT ROSE SPECIAL

- 1 Nocturne
- 1 Mirandy
- 1 Forty Niner
- 1 Peace
- 1 Charlotte Armstrong
- 1 Lowell Thomas
- 1 Crimson Glory
- 1 Taffeta

Regular \$15.50 value. No broken collections.

All 8 labeled for **\$13.65**

## Everblooming Floribunda Roses

Gorgeous, large-flowered, cluster roses that bloom profusely all summer. Plant among shrubs and evergreens. Make colorful borders or hedges; especially nice when massed in groups. Also excellent for long-lasting floral arrangements. Use in place of common shrubs for color all summer; hardy plants.

### Else Poulsen

**20R10**—Reliable and dependable variety with cheerful, bright rose-pink, semi-double blooms. Flowers continuously all season.

### Improved Lafayette

**20R11**—Immense clusters of large, fragrant, vivid crimson blooms. A popular and favorite variety. Erect plants grow 3 ft. tall.

### Red Ripples

**20R12**—(New Improved Variety)—Our favorite! Magnificent, wavy-petaled flowers of intense red come in masses and almost hide plants. Strong-growing, blooms constantly.

### Floradora

**20R14**—(AAR'S Award 1945)—Spectacular for its brilliance and profusion of big, double camellia-like, cinnabar-red flowers. Vigorous grower and abundant bloomer.

### Dagmar Spaeth

**20R15**—Big, double blooms of pure snow-white, richly scented. Vigorous, free flowering, hardy and healthy.

### Rose Elf

**20R16**—New, double, pink sweet-heart rose. Exceptionally dainty, sweet and beautiful. Delightfully fragrant. Highly recommended.

Choice of above 6 favorite floribundas in big, 2 yr. Ohio Northern grown plants.

- 2 yr., No. 1 1/2, \$1.00 each; 3 for \$2.85; 10 for \$8.95.
- 2 yr., No. 1, \$1.15 each; 3 for \$3.30; 10 for \$10.50.





# Climbing ROSES FAST GROWING · HARDY

Appreciated for their scores of fragrant, colorful flowers and pleasing summer foliage. Grow them on trellises, fences, walls or any place where the garden picture needs accent or coverage of some architectural feature. All varieties listed make beautiful, long-lasting bouquets.

## Climbing Silver Moon

**21CR1**—Large, white flowers (4½ inches across) with golden centers and long, strong stems. Vigorous growing, with beautiful glossy foliage. **2 yr. No. 1, 90c each; 3 for \$2.55; 10 for \$7.95.**

## Climbing Paul's Scarlet

**21CR3**—Favorite, large flowering climbing rose. The parent of Blaze and winner of Gold Medal at the National Society's Exhibition. Striking brilliant scarlet color. Large solitary flowers like Climbing American Beauty; blooms over a long period. New, reduced prices. **2 yr. No. 2, 60c each; 3 for \$1.65. 2 yr. No. 1, 85c each; 3 for \$2.40.**

**3 yr. giants, xx size, \$1.15 each**

**3 for \$3.25**

## Climbing American Beauty

**21CR2**—Abundance of beautiful big, double, bright red, fragrant blooms. Has strong climbing habit, healthy foliage with the fragrance, form and color of its famous parent American Beauty. **2 yr. No. 1, 90c each; 3 for \$2.55; 10 for \$7.95.**

### CLIMBING ROSE SPECIAL

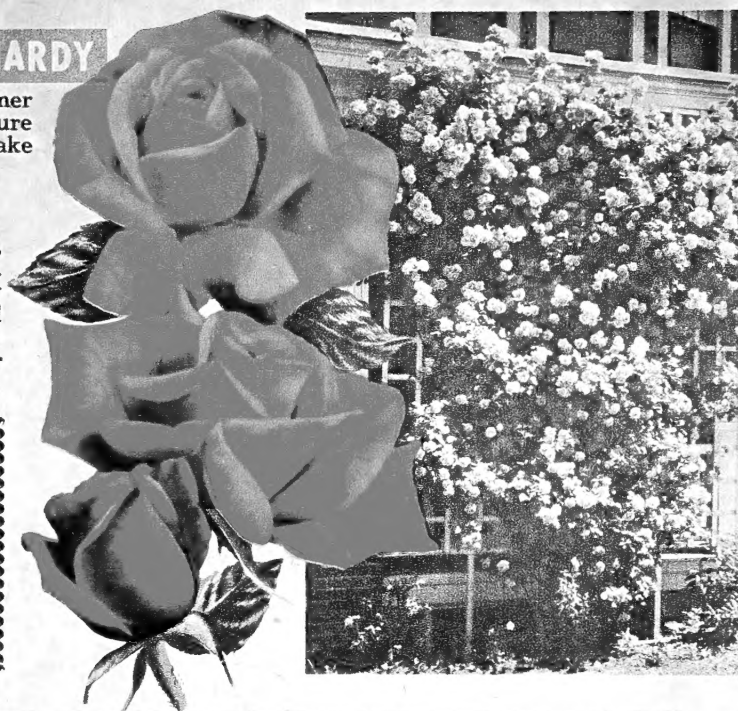
**21CRS4** One each ● Silver Moon

● Cl. American Beauty ● Paul's Scarlet

All 3 large No. 1 size, labeled.

Regular \$2.65 Value

**All 3 for \$2.19**



## Everblooming CLIMBING ROSES

### Climbing Blaze

**21CR5**—(Plant Patent No. 10)—Most popular of all climbing roses. Dazzling in its brilliance, magnificent in its profusion of vivid, scarlet blooms. Tall, vigorous growing with healthy foliage, extremely winter hardy. The large blooms (Produced in clusters) almost conceal the foliage in spring with intermittent blooms throughout the summer and plenty of color again in the fall. **2 yr. No. 1, \$1.25 each; 3 for \$3.45. 2 yr. XX giants, \$1.69 each; 3 for \$3.75**

### Climbing J. H. Nicholas

**21CR6**—(Plant Patent No. 457)—Immense, fully double intensely fragrant, deep rose-pink blooms continuously from late spring until winter. The everblooming performance is amazing, the plants are vigorous, extremely hardy, healthy and of medium height. Big, double, hybrid, tea-like blooms, often 5 to 6 inches across on long stems, **2 yr. No. 1 size, \$1.69 each; 3 for \$3.75.**

### New Dawn

**21CR7**—(Plant Pat. No. 1)—Rated the best hardy, everblooming climbing rose ever produced. Perfect large, double hybrid-tea-like blooms continuously all season of lovely apple blossom pink with delicate old rose fragrance. Trim, perfectly formed, pointed buds on long stems are superb for bouquets and arrangements. Hardy, healthy, lustrous green foliage. Was \$1.50 each. **2 yr., No. 1 size, Now, \$1.25 each; 3 for \$3.45. 2 yr., XX, giants, \$1.69 each; 3 for \$3.75.**

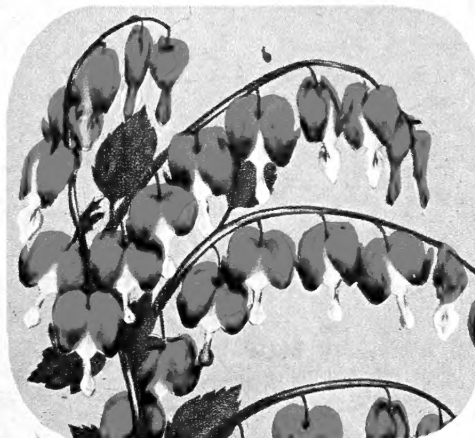
### Everblooming Climbing Rose Trio

**21CRS8**

One each of the following everblooming, climbing roses. (Blooms all season.) Large, 2 yr. No. 1 certified \$4.19 catalog value. One each labeled.

1 Cl. New Dawn,  
1 Cl. Blaze,  
1 Cl. J. H. Nicholas

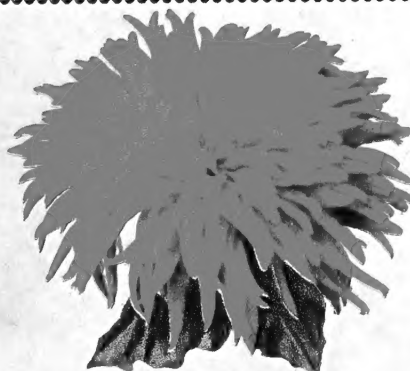
**All 3 for \$3.75**



### Old Fashioned Bleeding Heart

**21P9**—(Dicentra Spectabilis)—Truly romantic, heart-shaped flowers of great beauty and gracefulness. Lovely in mixed-bouquets. Tall growing with largest flowers. Grows best in semi-shade producing its profusion of blooms for several weeks in late spring.

**75c each 3 for \$1.95**  
**6 for \$3.75**



### QUILLED CHRYSANTHEMUMS

**21C17**—Long, rolled, pointed petals on big, double blooms that resemble giant, cactus-dahlia flowers often 5 inches in diameter. All profuse flowering and striking colors. Choice of yellow, pink, white and red. Big, field grown clumps, **45c each; 3 for \$1.19; 10 for \$3.75.**

## SPRING HILL'S EVERBLOOMING HARDY HYBRID TEA

### Rose Garden Special

Accepted from coast to coast for their gorgeous colors, delightful fragrance and profusion of blooms all season. Plant these sturdy, dependable varieties for a big supply of beautiful cut-flowers and continuous blooms in your garden this summer. We highly recommend these quality roses offered at a big saving. All of them Northern Ohio 2 yr. field grown.

- AMI QUINARD—21R10**—Almost black.
- SISTER THERESA—21R11**—Huge yellow.
- BETTY UPRICHARD—21R12**—Lovely pink.
- JOSEPHERRAUD—21R13**—Exquisite orange.
- TALISMAN—21R14**—Orange, red and gold.
- ETOILE DE HOLLAND—21R15**—Deep crimson.
- MCGREY'S IVORY—21R16**—Soft White.

Choice of above seven roses:

**2 yr., No. 1½, 90c each; 3 for \$2.55;**  
**6 for \$4.95. 2 yr., No. 1, \$1.10 each; 3**  
**for \$3.15; 6 for \$5.95.**



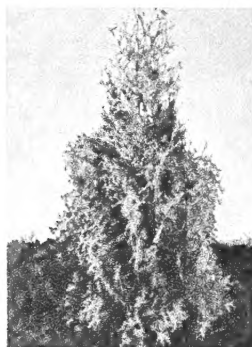
### World's Finest BUTTON MUMS

**21C18**—Compact, perfect, double, button-like flowers in great profusion unsurpassed for cutting and garden beauty. Guaranteed America's finest varieties for hardiness, healthiness and profusion of perfect blooms. Choice of Red, Bronze, Pink, Yellow and White. Big, field grown clumps, **50c each; 3 for \$1.25; 10 for \$3.95.**

**Make Big Money**

# GROW YOUR OWN EXPENSIVE EVERGREENS

It's Easy, Economical and Interesting. Spring Hill's Choice Landscape Varieties . . . A Thrifty Purchase



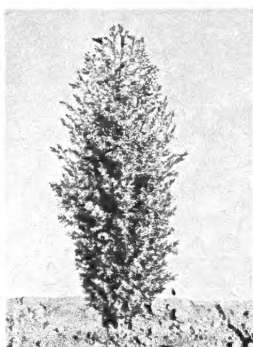
**Pyramid Arbor Vitae**

**22E1**—Dark green all year. Densely branched, grows naturally into tall, slender column. Very popular as a landscape variety. Pot plants, 8 to 10 inches tall, 55c each; 3 for \$1.45. Heavy (like picture) 15 to 18 inches tall, \$1.65 each; 2 for \$3.00. Big landscape size, 3 ft. tall, \$5.25 each; 2 for \$9.95.



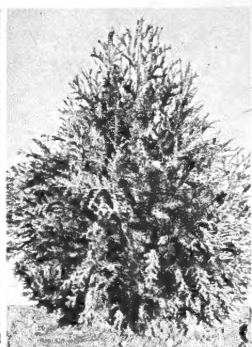
**Scotch Pine**

**22E2**—Long, dark green needles on thickly set branches, tall and fast growing, compact trees. Recommended for tall screens. 4 yr. transplanting size, 8 to 10 inches tall, 50c each; 3 for \$1.35. 6 yr., 12 to 15 inches tall, \$1.35 each; 2 for \$2.40. Big, landscape size, 3 ft. tall, \$5.00 each; 2 for \$9.50.



**Irish Juniper**

**(Fastigata) — 22E3** — One of our best, tall, narrow, formal evergreens. Rapid growing but does not grow over about 6 feet tall. Beautiful in any planting. Pot plants, 6 to 9 inches tall, 45c each; 3 for \$1.20. Heavy (like picture) 15 to 18 inches tall, \$1.35 each; 2 for \$2.45. Big, landscape size, 3 ft., \$4.50 each; 2 for \$8.50.



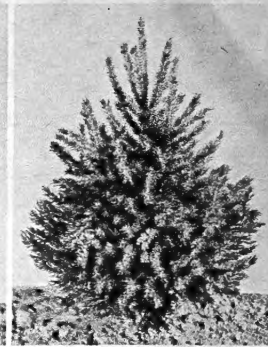
**American Arbor Vitae**

**22E4**—A good, fast, tall growing variety. Makes good screens, hedges and used in foundation and group plantings. 4 year, transplanting size, 8 to 10 inches tall, 35c each; 3 for 90c. Heavy (like picture) 15 to 18 inches tall, \$1.45 each; 2 for \$2.65. Big, landscape size, 3 ft. tall, \$4.50 each; 2 for \$8.50.



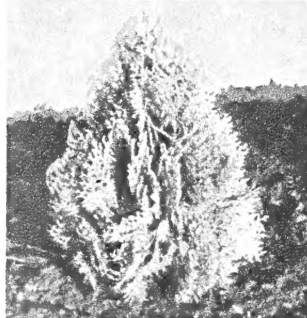
**Taxus Hicksi**

**(Upright Columnar Yew) — 22E5**—Semi-dwarf, tall, narrow habit, columnar. Best evergreen for planting in shade. Most winter hardy and dependable. Pot plants, 8 to 10 inches tall, 50c each; 3 for \$1.35. Heavy (like picture) 15 to 18 in. tall, \$1.65; 2 for \$3.00. Big, landscape size, 2½ to 3 ft. tall, \$6.00 ea.; 2 for \$11.50.



**Norway Spruce**

**22E6**—Most extensively planted, outdoor living Christmas tree. Highly recommended for avenue and specimen plantings. Fast growing, tall, stately plants. Transplanting size, 6 to 9 inches tall, 40c each; 3 for \$1.05. Heavy (like picture) 15 to 18 in. tall, \$1.75; 2 for \$3.25. Big, landscape size, 3 ft. tall, \$4.25; 2 for \$7.95.



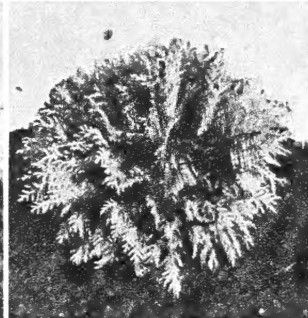
**Golden Biota**

**(Dwarf Golden Oriental Arbor Vitae) — 22E7**—Most attractive and perfect shaped of all dwarf, compact evergreens. Pot plants, 6 to 8 inches tall, 50c each; 3 for \$1.35. Heavy (like picture) 12 to 15 inches tall, \$1.65 each; 2 for \$3.00. Big, landscape size, 2 ft. tall, \$4.75 each; 2 for \$9.00.



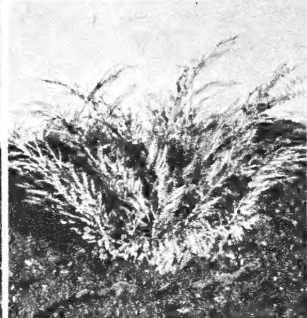
**Taxus Spreading**

**(Cuspidata) — 22E8**—Horizontal or spreading. The branches grow horizontal like Juniper Pfitseriana; likes shade. Pot plants, 8 to 10 inches tall, 50c each; 3 for \$1.35. Heavy (like picture) 15 to 18 inches tall, \$1.85 each; 2 for \$3.45. Big, landscape size, 2½ ft. spread, \$6.00 each; 2 for \$11.50.



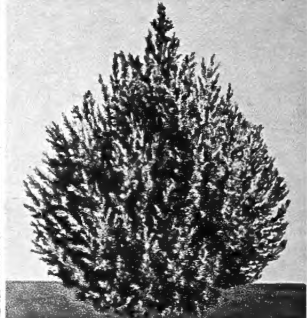
**Globe Woodwardi**

**22E9**—Best and most compact, dark green, dwarf, symmetrical variety. Grows naturally in ball shape, extra good for landscaping. Pot plants, 7 to 9 inches tall, 50c each; 3 for \$1.35. Heavy (like picture) 12 to 15 inches tall, \$1.50 each; 2 for \$2.75. Big, landscape size, 2 ft., \$4.25 each; 2 for \$7.95.



**Juniper Pfitseriana**

**22E10**—Best, most planted, fast growing, spreading, landscape evergreen for all sections and soils. Pot plants, 6 to 8 inches tall, 55c each; 3 for \$1.45. Heavy (like picture) 15-18 in. tall, \$1.65; 2 for \$3.00. Big, landscape size, 2 to 3 ft. spread, \$5.25 each; 2 for \$9.95.



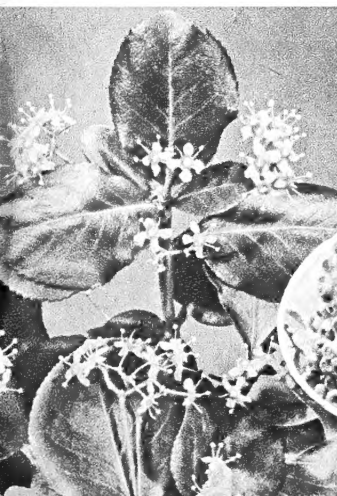
**Spiny Greek Juniper**

**(Excelsa Stricta) — 22E11** — Attractive bluish-green foliage, dense, formal, conical-shaped, dwarf plants that do not require trimming. Pot plant, 4 to 6 inches tall, 45c each; 3 for 1.20. Heavy (like picture) 12 to 15 inches tall, \$1.60 each; 2 for \$2.89. Big, landscape size, 2 ft. tall, \$4.25 each; 2 for \$8.00.

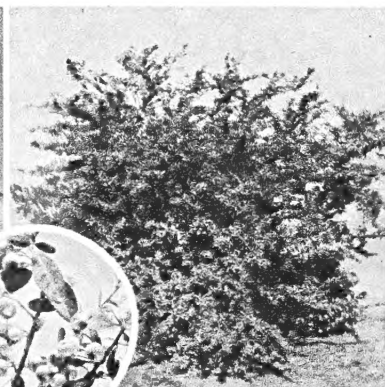
## BROADLEAF EVERGREENS

The following hardy shrubs have persistent foliage or the leaves stay on all winter. They add grace and charm to any planting in winter and summer. All bloom and have attractive berries. Grows in limestone or acid soils.

**Evergreen Bittersweet**



**Evergreen Firethorn**



**Holly Leaf Mahonia**



### Evergreen Firethorn

**22E12**—(*Pyraeantha Pauciflora*) New, dwarf strain famous for its scarlet fruit and attractive foliage; green winter and summer. Pot plants 8 to 10 in. 70c ea.; 3 for \$1.95. Heavy, pot plants 12 to 15 inches, \$1.25 each; 3 for \$3.30.

### Evergreen Bittersweet

**22E13**—(*Euonymus Patens*) Grows two to three feet tall. Very popular, dwarf, bushy evergreen shrub. 6 to 8 inch pot plants, 50c each; 3 for \$1.35; 6 for \$2.50. 12 to 15 inch, \$1.50 each.

### Holly Leaf Mahonia

**22E14**—(*Mahonia Aquifolia*) Glistening green, holly-leaf foliage accented with reddish-bronze tints. Clusters of attractive blue, grape-like fruits. Grows well in shade. Transplanting size, 6 to 8 inches tall, 35c each; 3 for 95c. 15 to 18 inches tall, \$3.75 each; 3 for \$10.50.

**SPRING HILL NURSERIES**  
TIPP CITY, OHIO





## 30 ft. Foundation Planting for only \$39<sup>95</sup>

**23E1**—Amazing savings! 12 big landscape size evergreens as pictured at 25% Savings. Guaranteed big, heavy plants as pictured. Descriptions see opposite page. Dug bareroot at the nursery for shipping to save delivery costs (see notice this page). A complete 1st class planting, for less than 50% you would expect to pay. F.O.B. Tipp City, Ohio. **All 12 Evergreens \$39.95.**

**102nd ANNIVERSARY  
EVERGREEN SPECIAL**

**ALL 12  
EVERGREENS \$39<sup>95</sup>  
... as pictured**

- A—2 Dwarf Golden Biota, 2 ft. . . . \$9.00
  - B—2 Pyramid Arbor Vitae, 3 ft. . . . 9.95
  - C—2 Globe Arbor Vitae, 2 ft. . . . 7.95
  - D—2 Juniper Pfitseriana, 2 ft. . . . 9.95
  - E—2 Spiny Greek Juniper, 2 ft. . . . 8.00
  - F—2 American Arbor Vitae, 3 ft. . . . 8.50
- Regular catalog value **\$53.35**

*Do your own planting . . . Amazing Savings!*



### ENTRANCE GROUP SPECIAL (19% Discount) 23E2

- 2 Pyramid Arbor Vitae, matched pair, 2 to 2½ ft. . . . \$ 6.50
  - 2 Globe Arbor Vitae, matched pair, 1½ ft. tall & broad . . . 5.75
- Certified catalog value . . . . . \$12.25

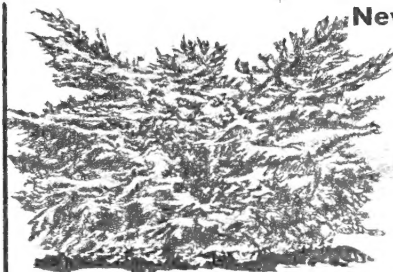
**All 4 for \$9.95**

Spring Hill Nurseries; Tipp City, Ohio  
102 years of Reliable Service



**Colorado  
Blue Spruce**

**23E5**—One of the showiest evergreens. Perfect shape, impressive blue color add beauty to any property. Special savings. 4 to 6 inch transplanting size, 4 for \$1.00. (5 to 7 inch size see 1c sale, page 14). 2 ft. heavy (like picture) \$7.50 each.



**New Blue Juniper Pfitseriana**

**23E3**—New reduced Prices—Beautiful silvery-blue foliage—as if dusted with sparkling silver. Plants unsurpassed for foliage contrast in landscape plantings. Rapid growing, very hardy. Recommended new variety. 5 yr., 8 to 12 inch size, 90c each; 2 for \$1.60; 6 for \$4.50. Big landscape size, 2 to 3 ft. spread, \$4.95; 2 for \$9.40; 6 for \$27.60.

#### HOW TO PLANT EVERGREENS

Plant evergreens immediately upon arrival as they have resin in their sap. Keep from sun and air. Dig hole 8" to 10 inches larger than the ball of earth or root spread. Set evergreen 1 to 2 inches deeper than soil marks on the trunk of the evergreen. Fill hole half full of rich top soil, firm well, then fill hole with water.



Fill hole ½ full of good top soil. Pack firmly, soak well with water.

#### EVERGREEN DIGGING NOTICE

All evergreens for shipping will be fresh dug from our field bare root and wrapped in moist peat. Present day delivery and packing costs make it too expensive to ship balled and burlapped. Our experience shows that bare root evergreens deliver better and grow just as well. Balled and burlapped evergreens available when you drive to the nursery.

### DOORSTEP ENTRANCE GROUP

- A—2 Pyramid Arbor-Vitae, 8 yr., 15-18 inch tall spine like, 2 for \$4.00.
- B—2 Juniper Pfitseriana, 6 yr., 10-15 inch spreading, 2 for \$4.00.
- C—2 Globe Arbor-Vitae, 6 yr., 10-14 inch wide, 2 for \$4.00.

23E4

**All 6 for  
\$7.98**

2 each of above 3 varieties junior landscape size shipped individually wrapped in finest grade peat. Peat is fine for evergreens, mix with dirt when planting.



**DOORSTEP ENTRANCE GROUP**



# SPRING HILL'S 1951

# FALL SALE



## IMPORTED GIANT DARWIN TULIPS

Six of the best giant flowering tulips. World famous for magnetic color, exquisite form and massive size. Plant this fall for blooms next spring.

- (A) **ALL BRIGHT**  
24T1—Magnificent, bright fiery-red.
- (B) **DILLENBURG**  
24T2—Brilliant orange, golden edge
- (C) **GOLDEN HARVEST**  
24T3—Large, deep lemon-yellow.
- (D) **THEMIS**  
24T4—Pure white, excellent form.
- (E) **WM. COPELAND**  
24T5—Big, exquisite bright violet.
- (F) **PRINCESS ELIZABETH**  
24T6—Vivid, rosy-pink.

- 24T7 — 12 bulbs ( 2 of each, unlabeled) for . \$1.20
- 24T8 — 18 bulbs ( 3 of each, unlabeled) for . \$1.70
- 24T9 — 24 bulbs ( 4 of each, unlabeled) for . \$1.98
- 24T10— 30 bulbs ( 5 of each, unlabeled) for . \$2.35
- 24T11— 60 bulbs (10 of each, labeled) for . \$4.50
- 24T12—120 bulbs (20 of each, labeled) for . \$8.40

Choice of above six Darwin tulips, all guaranteed 1st size, 11 to 12 cm. imported Dutch bulbs. 6 of a kind 65c; 12 of a kind \$1.10.

### 25 of a kind \$1.98

### Special Darwin Tulip Mixture SPRING HILL'S LOW PRICE OFFER

24T12—Most remarkable race of tulips. Distinguished by their massive size, exquisite form, vigorous growth and vivid colors. Well balanced hand made mixture from best varieties of Red, Yellow, White, Pink, Orange and Purple. Unsurpassed for beds, borders and mixed plantings. Fully Guaranteed. Big, imported 1st size, 11 to 12 cm. bulbs.

10 for 65c  
20 for \$1.00

**100 for \$4.85**

### FREE OFFER

SEE DETAILS  
FRONT COVER



SEC. 34.66 P. L. & R.  
U. S. POSTAGE  
**PAID**  
PERMIT NO. 3  
TIPP CITY, OHIO

Library, U.S. Dept. of Agr.  
Washington 25, D.C.

**SPRING HILL NURSERIES, TIPP CITY, OHIO • ESTABLISHED 1849**